

Specifications

Partner	Mayer
Contents	75% post-consumer recycled polyester, 25% polyester
Repeat	0.17" W, 0.20" L
Weight	14.5 oz./lin. yd.
Width	54"

Performance

Abrasion	105,000 double rubs
Flammability	NFPA 260/UFAC Class 1, ASTM E84 (unadhered) Class 1 or A, California Technical Bulletin 117-2013
Lightfastness	40 hours
Crocking	Dry and wet: Class 4 minimum
Breaking Strength	Warp: 229 lbs. Weft: 201 lbs.

Sustainability

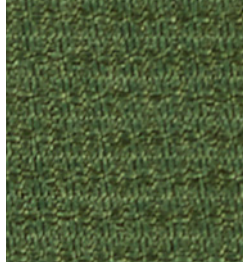
GREENGUARD Gold Certified for low chemical and particle emissions to UL standard UL 2818. This fabric may contribute to LEED certification.

For more information including application options, please visit inscapesolutions.com.

Prism



ALABASTER
U1690



ASPARAGUS
U1691



CAFÉ AU LAIT
U1692



CARAMEL
U1693



CARIBBEAN
U1694



CERULEAN
U1695



CHARCOAL
U1696



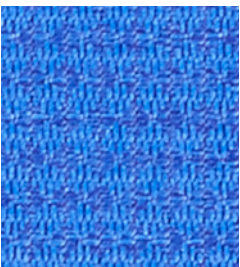
CLARET
U1697



CLAY
U1698



CLEMENTINE
U1699



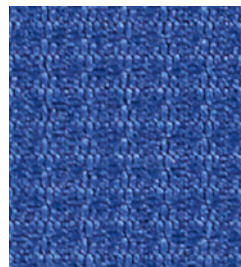
CORNFLOWER
U1700



DOVE
U1701



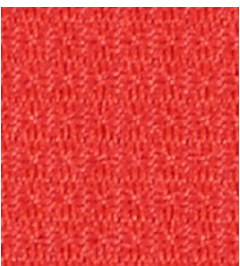
ESPRESSO
U1702



INDIGO
U1703



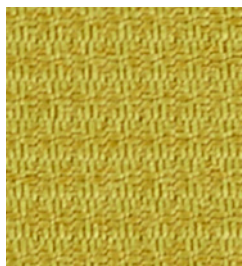
KALE
U1704



LIPSTICK
U1705



MOCHA
U1706



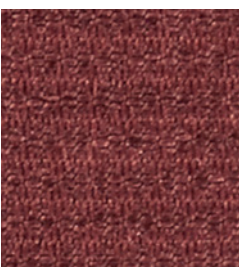
OLIVE
U1707



ONYX
U1708



PLUM
U1709



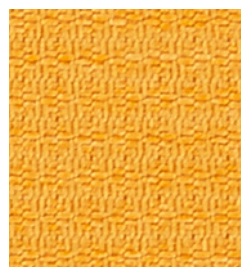
RAISIN
U1710



STONE
U1711



TOMATO
U1712



TOPAZ
U1713



ZINC
U1714