

Specifications

Partner	Mayer
Contents	83% post-consumer recycled polyester, 17% polyester
Repeat	0.33" W, 0.20" L
Weight	16.5 oz./lin. yd.
Width	54"

Performance

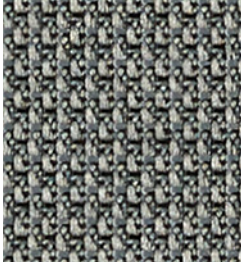
Abrasion	185,000 double rubs
Flammability	NFPA 260/UFAC Class 1, ASTM E84 (unadhered) Class 1 or A, California Technical Bulletin 117-2013
Lightfastness	40 hours
Crocking	Dry and wet: Class 4 minimum
Breaking Strength	Warp: 359 lbs. Weft: 315 lbs.

Sustainability

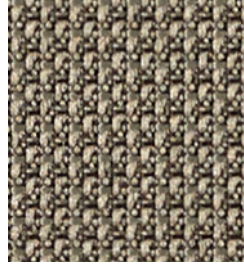
GREENGUARD Gold Certified for low chemical and particle emissions to UL standard UL 2818. This fabric may contribute to LEED certification.

For more information including application options, please visit inscapesolutions.com.

Optic



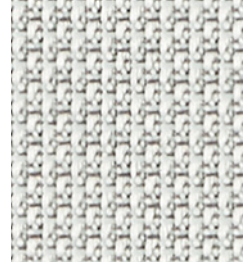
ASH
U1907



BROWN BEAR
U1908



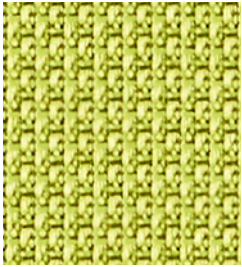
COAL
U1909



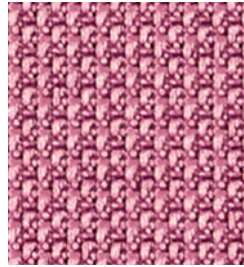
ELEPHANT
U1910



FIELDSTONE
U1911



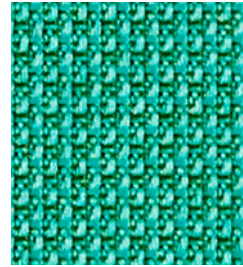
GREEN APPLE
U1912



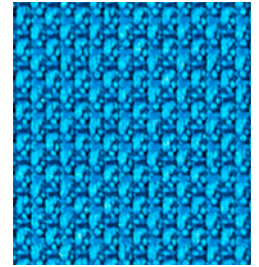
MULBERRY
U1913



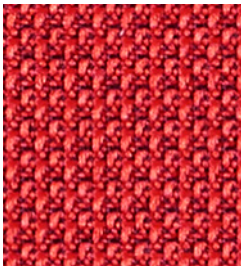
MUSHROOM
U1914



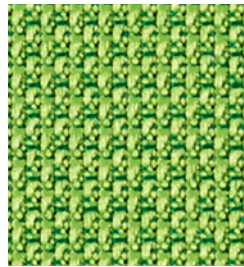
MYRTLE
U1915



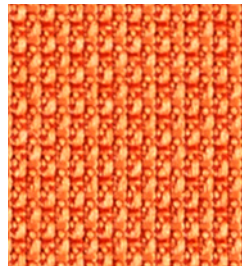
OCEAN
U1916



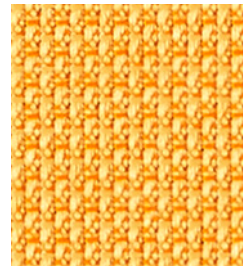
RED
U1917



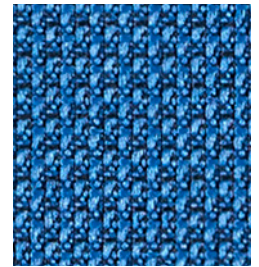
SPRINGTIME
U1918



SUNRISE
U1919



TANGERINE
U1920



YALE
U1921