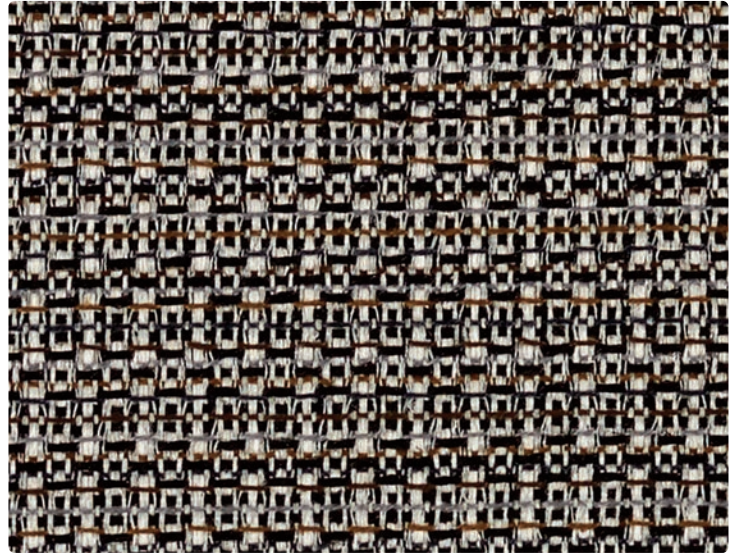
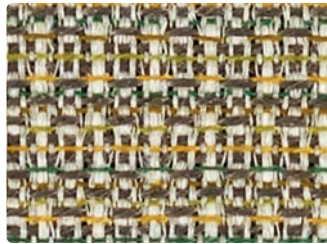




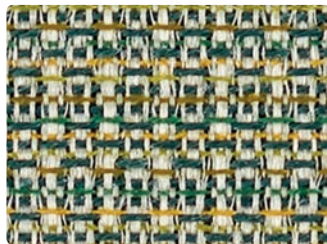
399-026 Aquatint



399-016 Piano



399-030 Cypress



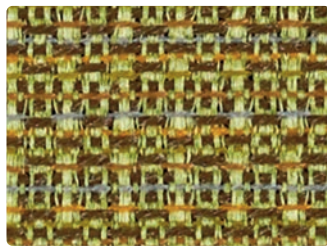
399-013 Jadeite



399-002 Chamois



399-007 Pearl



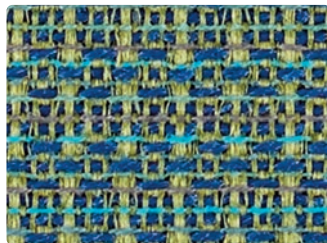
399-003 Jungle



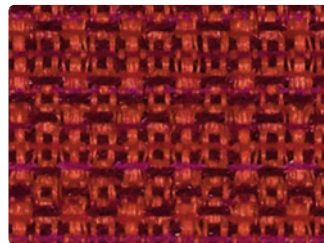
399-009 Amber



399-010 Oyster



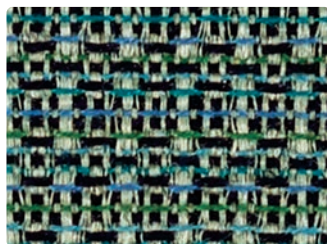
399-014 Oasis



399-001 Rouge



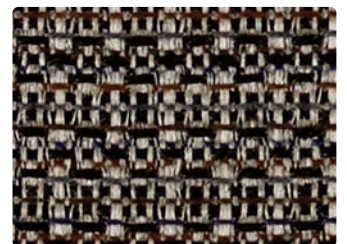
399-020 Truffle



399-004 Oceanic



399-000 Mahogany



399-006 Sultry



Application  
Seating

Content  
100% Polyester

Width  
54 inches

Abrasion  
Passes 50,000 Double Rubs

Finish  
Stain Repellent

Reduced Environmental Impact  
GREENGUARD Gold Certified









**TECHNICAL INFORMATION**

Content: 100% Polyester  
 Width: 54"  
 Weight: 14.912 oz./linear yd.

Backing: Acrylic  
 Finish: Stain Repellent  
 Cleaning Code: WS, BC

Approx. Repeat: 0.063" H, 1.818" V  
 Directional: Yes  
 Railroaded: No

**PERFORMANCE** (Certification Marks Owned by ACT.)

Test Method	Results
Surface Abrasion: Heavy Duty  *	ASTM D 4157 (Cotton Duck) Passes 50,000 Double Rubs
Breaking Strength:  *	ASTM D 5034 (Grab Test) Warp 162 lbs/Fill 303 lbs
Seam Slippage:  *	ASTM D 4034 Warp 31 lbs/Fill 58 lbs
Pilling Resistance:  *	ASTM D 3511 Class 5
Colorfastness to Crocking:  *	AATCC 8 Dry: Class 4 min / Wet: Class 3 min
Colorfastness to Light:  *	AATCC 16 Class 4 min at 40 hours

**FLAMMABILITY** \*

California Technical Bulletin 117-2013 Passes  
 NFPA 260 (Equivalent to UFAC) Class 1 Passes  
 May comply with California Technical Bulletin 133 when combined with appropriate components.

**REDUCED ENVIRONMENTAL IMPACT**

**GREENGUARD Gold Certified products are tested for low chemical emissions to standard UL 2818. For more information, visit [UL.com/gg](http://UL.com/gg).**

**CLEANING INFORMATION**

**WS: Water/Solvent Cleaner** – Spot clean with a mild solvent, an upholstery shampoo, or the foam from a mild detergent. When using a solvent or dry cleaning product, follow instructions carefully and clean only in a well-ventilated room. Avoid any product that contains carbon tetrachloride or other toxic materials. With either method, pretest a small area before proceeding. Always rinse promptly with clean water.

**BC: Bleach Cleanable** - 1 part bleach, 9 parts water = 10% bleach, 90% water solution. Do not clean/disinfect fabric for longer than 10 minutes using the 10% bleach solution. Always rinse promptly with clean water after applying the bleach solution. Failure to do so will void any and all warranties.

**ADDITIONAL INFORMATION**

**Custom Capabilities:** All patterns can be custom colored. Minimum yardage applies.

**Memo Samples:** Please keep this card intact. Individual memo samples can be ordered on our website or by contacting customer service.

**Fabric Color Matching:** Mayer Fabrics always attempts to ship a satisfactory commercial match. Because of industry standard dye lot variation, colors may not match exactly.

**Digital Swatch Card Color Matching:** Due to color variations on different monitors and color printers, actual swatch colors may vary slightly. Please request a memo sample from Mayer Fabrics to ensure proper color representation.

**Specifications:** Specifications are correct at the time of printing. Current specifications are available on our website.

**For information or assistance with products or services, call us at 800.428.4415 or refer to our website, [www.mayerfabrics.com](http://www.mayerfabrics.com).**



Water and Stain  
Repellent Finish



**MAYERFABRICS**

**GSA Contract #GS-28F-0022P**

