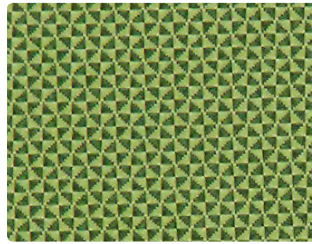
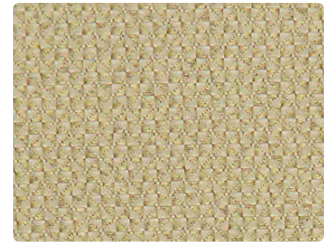


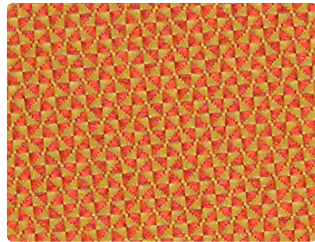
300-002
Wheat



300-003
Spring Green



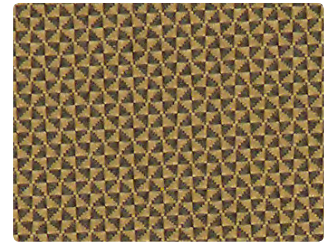
300-007
Chalk



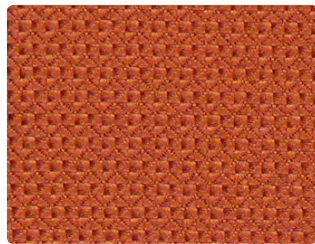
300-019
Golden Orange



300-033
Leaf



300-000
Honeycomb



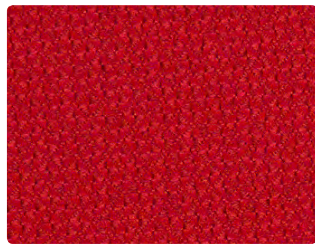
300-009
Umber



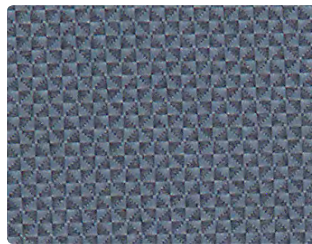
300-023
Mallard



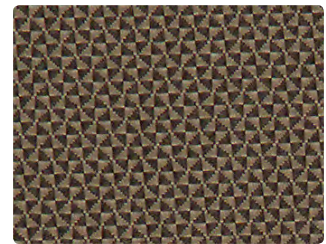
300-036
Pumice



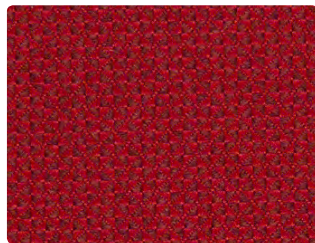
300-011
Hibiscus



300-024
Laguna



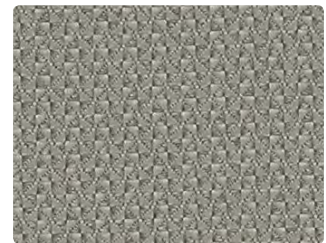
300-016
Khaki



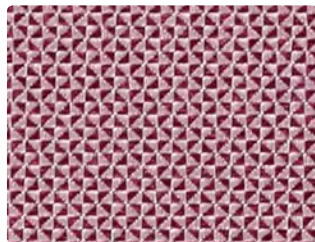
300-001
Deep Crimson



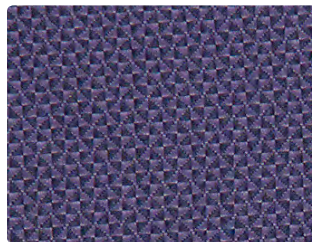
300-014
Skyway



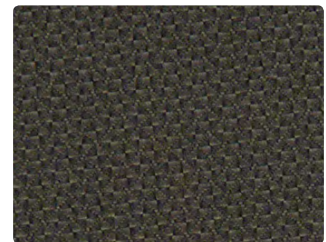
300-026
Mercury



300-015
Violet



300-004
Midnight Blue



300-006
Granite

Application
Upholstery Seating

Content
100% Polyester

Width
54 inches

Abrasion (Wyzenbeek/Cotton Duck)
Passes 237,000 Double Rubs

Finish
Stain Repellent

Reduced Environmental Impact
GREENGUARD Gold Certified

TECHNICAL INFORMATION

Content: 100% Polyester

Width: 54"

Backing: Acrylic

Approx. Repeat: Non-matching

Weight: 13.06 oz./linear yard

Finish: Stain Repellent

Directional: Yes

Railroaded: No

PERFORMANCE

Surface Abrasion: Heavy Duty ASTM D 4157
(Wyzenbeek/Cotton Duck)

Pilling Resistance ASTM D 3511

Colorfastness to Crocking AATCC-8

Colorfastness to Light AATCC 16

Results

Passes 237,000 Double Rubs Multiple factors affect fabric durability and appearance retention, including end-user application and proper maintenance. Wyzenbeek results above 100,000 double rubs have not been shown to be a reliable indicator of increased fabric lifespan.

Class 5

Dry: Class 4 min / Wet: Class 4 min

Class 4.5 at 40 hours

FLAMMABILITY

California Technical Bulletin 117-2013

NFPA 260/UFAC Class 1

ASTM E84 (Unadhered) Class 1 or A

IMO A.652(16) 8.2

May comply with California Technical Bulletin 133 when combined with appropriate components.

REDUCED ENVIRONMENTAL IMPACT

This product is GREENGUARD Gold Certified for low chemical and particle emissions to UL standard UL 2818 and may contribute to LEED certification. For complete information visit mayerfabrics.com and UL.com/gg.

CLEANING INFORMATION

S: Solvent

ADDITIONAL INFORMATION

Custom Capabilities: All patterns can be custom colored. Minimum yardage applies.

Digital Swatch Card Color Matching: Due to color variations on different monitors and color printers, actual swatch colors may vary slightly. Please request a memo sample from Mayer Fabrics to ensure proper color representation.

Specifications: Specifications are correct at the time of printing. Current specifications are available on our website.



This fabric meets or exceeds these ACT performance guidelines. *Certification Marks owned by ACT*



Water and Stain Repellent Finish



This 100% polyester fabric is included in the Underwriter's Laboratory Fabric Recognition Program. Additional testing of this U.L. recognized component is not required on approved panels from participating manufacturers.



MAYERFABRICS