



420-004 Oceanic



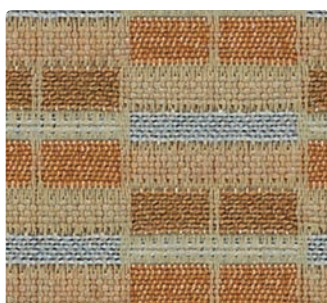
420-007 Vellum



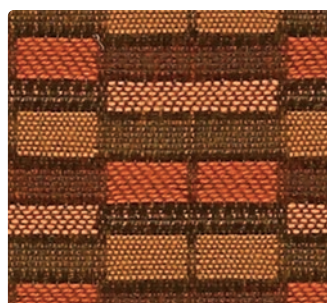
420-002 Sunshine



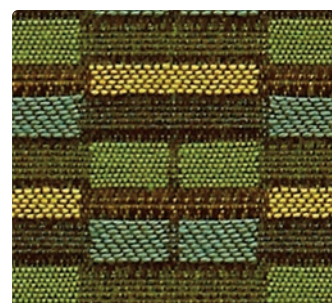
420-013 Citron



420-010 Sea Salt



420-009 Coral Reef



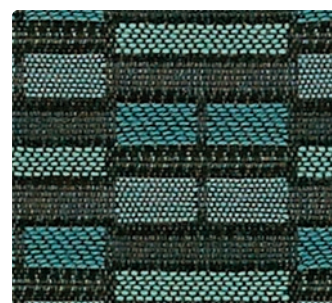
420-003 Jungle



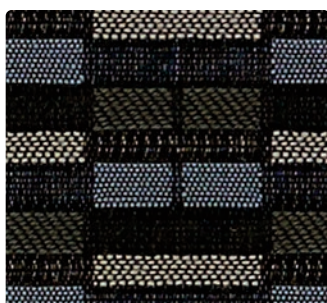
420-000 Basket



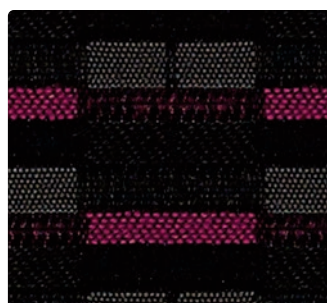
420-001 Sangria



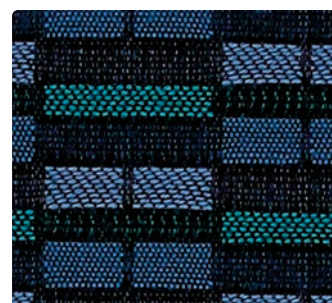
420-024 Aquatint



420-006 Slate



420-016 Cyberspace



420-014 Mediterranean



Application
Seating

Content
100% Polyester

Width
54 inches

Abrasion
Passes 51,000 Double Rubs







Finish
Stain Repellent

Reduced Environmental Impact
GREENGUARD Gold Certified



TECHNICAL INFORMATION

Content: 100% Polyester Width: 54" Weight: 15.504 oz./linear yd.	Backing: Acrylic Finish: Stain Repellent Cleaning Code: WS, BC	Approx. Repeat: 1.875" H, 1.25" V Directional: Yes Railroaded: No
------------------------------------------------------------------------	----------------------------------------------------------------------	-------------------------------------------------------------------------

PERFORMANCE (Certification Marks Owned by ACT.)	Test Method	Results
Surface Abrasion: Heavy Duty  *	ASTM D 4157 (Cotton Duck)	Passes 51,000 Double Rubs
Breaking Strength:  *	ASTM D 5034 (Grab Test)	Warp 156 lbs/Fill 172 lbs
Seam Slippage:  *	ASTM D 4034	Warp 71 lbs/Fill 71 lbs
Pilling Resistance:  *	ASTM D 3511	Class 5
Colorfastness to Crocking:  *	AATCC 8	Dry: Class 4 min / Wet: Class 3 min
Colorfastness to Light:  *	AATCC 16	Class 4 min at 40 hours

FLAMMABILITY *

California Technical Bulletin 117-2013	Passes
NFPA 260 (Equivalent to UFAC) Class 1	Passes
May comply with California Technical Bulletin 133 when combined with appropriate components.	

REDUCED ENVIRONMENTAL IMPACT

GREENGUARD Gold Certified products are tested for low chemical emissions to standard UL 2818. For more information, visit UL.com/gg.

CLEANING INFORMATION

WS: Water/Solvent Cleaner – Spot clean with a mild solvent, an upholstery shampoo, or the foam from a mild detergent. When using a solvent or dry cleaning product, follow instructions carefully and clean only in a well-ventilated room. Avoid any product that contains carbon tetrachloride or other toxic materials. With either method, pretest a small area before proceeding. Always rinse promptly with clean water.

BC: Bleach Cleanable - 1 part bleach, 9 parts water = 10% bleach, 90% water solution. Do not clean/disinfect fabric for longer than 10 minutes using the 10% bleach solution. Always rinse promptly with clean water after applying the bleach solution. Failure to do so will void any and all warranties.

ADDITIONAL INFORMATION

Custom Capabilities: All patterns can be custom colored. Minimum yardage applies.

Memo Samples: Please keep this card intact. Individual memo samples can be ordered on our website or by contacting customer service.

Fabric Color Matching: Mayer Fabrics always attempts to ship a satisfactory commercial match. Because of industry standard dye lot variation, colors may not match exactly.

Digital Swatch Card Color Matching: Due to color variations on different monitors and color printers, actual swatch colors may vary slightly. Please request a memo sample from Mayer Fabrics to ensure proper color representation.

Specifications: Specifications are correct at the time of printing. Current specifications are available on our website.

For information or assistance with products or services, call us at 800.428.4415 or refer to our website, www.mayerfabrics.com.



Water and Stain Repellent Finish



MAYERFABRICS

GSA Contract #GS-28F-0022P

