

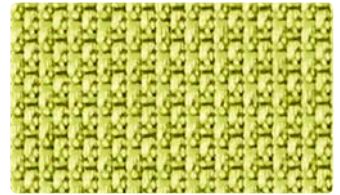
Yale
424-004



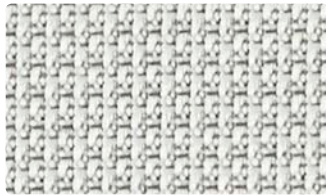
Fieldstone
424-017



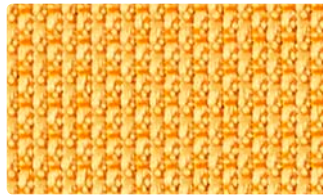
Mushroom
424-007



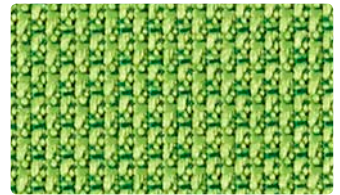
Green Apple
424-013



Elephant
424-026



Tangerine
424-019



Springtime
424-023

Application
Upholstery Seating

Content
83% Recycled Polyester,
17% Polyester

Width
54 inches

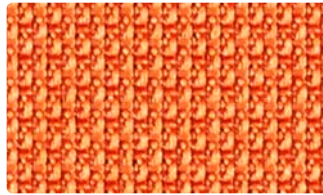
Abrasion (Wyzenbeek/Cotton Duck)
Passes 185,000 Double Rubs

Finish
Stain Repellent

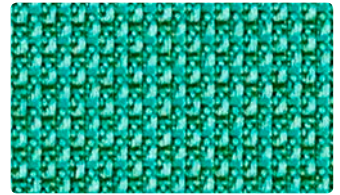
Reduced Environmental Impact
GREENGUARD Gold Certified



Coal
424-016



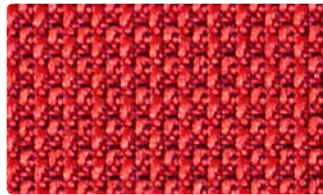
Sunrise
424-009



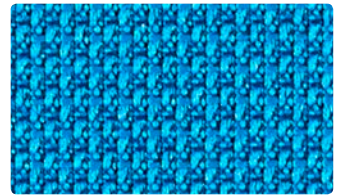
Myrtle
424-033



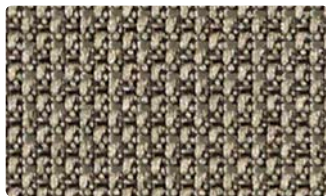
Ash
424-006



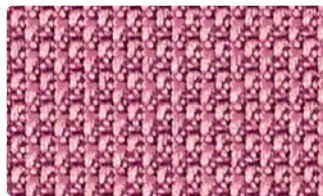
Red
424-001



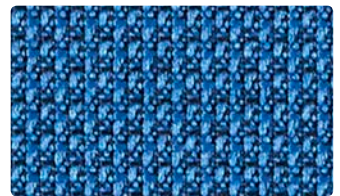
Ocean
424-024



Brown Bear
424-000



Mulberry
424-005



Yale
424-004

TECHNICAL INFORMATIONContent: **83% Post-Consumer Recycled Polyester**, 17% Polyester

Width: 54"

Weight: 16.5 oz./linear yard

Backing: Latex

Finish: Stain Repellent

Approx. Repeat: 0.33" H, 0.20" V

Directional: Yes

Railroaded: No

PERFORMANCESurface Abrasion: Heavy Duty ASTM D 4157
(Wyzenbeek/Cotton Duck)**Results**

Passes 185,000 Double Rubs Multiple factors affect fabric durability and appearance retention, including end-user application and proper maintenance. Wyzenbeek results above 100,000 double rubs have not been shown to be a reliable indicator of increased fabric lifespan.

Pilling Resistance ASTM D 3511

Class 4

Colorfastness to Crocking AATCC 8

Dry: Class 4 / Wet: Class 4

Colorfastness to Light AATCC 16E

Class 4 at 40 hours

FLAMMABILITY

California Technical Bulletin 117-2013

NFPA 260/UFAC Class 1

ASTM E84 (Unadhered) Class 1 or A

May comply with California Technical Bulletin 133 when combined with appropriate components.

REDUCED ENVIRONMENTAL IMPACT**This product is GREENGUARD Gold Certified for low chemical and particle emissions to UL standard UL 2818 and may contribute to LEED certification. For complete information visit mayerfabrics.com and UL.com/gg.****CLEANING INFORMATION**

WS: Water/Solvent Cleaner

ADDITIONAL INFORMATION**Custom Capabilities:** All patterns can be custom colored. Minimum yardage applies.**Specifications:** Specifications are correct at the time of printing. Current specifications are available on our website.**Digital Swatch Card Color Matching:** Due to color variations on different monitors and color printers, actual swatch colors may vary slightly. Please request a memo sample from Mayer Fabrics to ensure proper color representation.This fabric meets or exceeds these ACT performance guidelines.
*Certification Marks owned by ACT®Water and Stain
Repellent Finish

This 100% polyester fabric is included in the Underwriter's Laboratory Fabric Recognition Program. Additional testing of this U.L. recognized component is not required on approved panels from participating manufacturers.

**MAYER**FABRICS