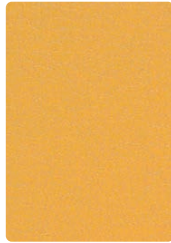




FT-007 Cream



FT-012 Dijon



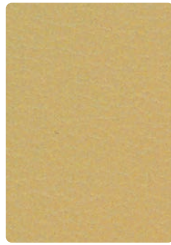
FT-032 Jonquil



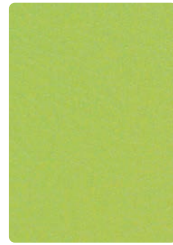
FT-029 Mango



FT-017 Biscuit



FT-027 Khaki



FT-033 Willow



FT-037 Mushroom



FT-030 Mocha



FT-043 Basil



FT-011 Lipstick



FT-022 Caramel



FT-010 Latte



FT-026 Dove



FT-003 Fern



FT-008 Plum



FT-019 Sepia



FT-020 Bark



FT-016 Slate



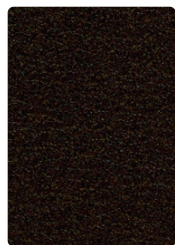
FT-044 Turquoise



FT-034 Bluejay



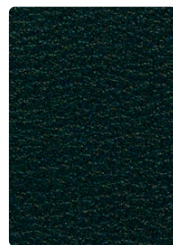
FT-001 Scarlet



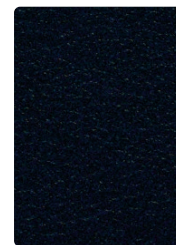
FT-000 Sable



FT-006 Jet



FT-014 Marine



FT-004 Sapphire



FT-009 Chili



**Application**  
Upholstery Seating

**Content**  
86% Vinyl face  
14% Polyester backing

**Width**  
54 inches

**Abrasion (Wyzenbeek/Cotton Duck)**  
Passes 651,000 Double Rubs

**Finish**  
Resilience<sup>SR</sup>

**Reduced Environmental Impact**  
GREENGUARD Certified  
Phthalate (21P) Free  
Lead Free



## TECHNICAL INFORMATION

Content: 86% Vinyl face, 14% Polyester backing – <b>Phthalate (21P) Free</b>	Approx. Repeat: None
Width: 54"	Directional: No
Weight: 28 oz./linear yd.	Railroaded: No
Finish: Resilience <sup>SR</sup>	
Cleaning Code: WS, BC	

PERFORMANCE	Test Method	Results
Surface Abrasion: Heavy Duty	ASTM D 3597/4157 (Cotton Duck)	Passes 651,000^ Double Rubs
Breaking Strength:	CFFA-17/ASTM D751	Warp 95 lbs/Fill 60 lbs
Seam Slippage:	CFFA-14/Method ASTM D751	Warp 45 lbs/Fill 45 lbs
Colorfastness to Crocking:	AATCC 8	Dry: Class 4 min / Wet: Class 4 min
Colorfastness to Light:	AATCC 16, Option 3	Passes 650 hours - Suitable for marine use
Cold Crack:	CFFA-6 Fed. Stnd. No. 191A-Method 5874	-20°F

## FLAMMABILITY

California Technical Bulletin 117-2013	Passes	FMVSS 302	Passes
NFPA 260/UFAC Class 1	Passes	IMO FTP 2010 Code MSC.307(88), Part 8, 3.1 & 3.2	Passes
May comply with California Technical Bulletin 133 when combined with appropriate components.			

## REDUCED ENVIRONMENTAL IMPACT

This product is **GREENGUARD Certified** for low chemical and particle emissions to UL standard **UL 2818** and may contribute to **LEED** certification. For complete information visit [mayerfabrics.com](http://mayerfabrics.com) and [UL.com/gg](http://UL.com/gg).

**Phthalates listed on Prop 65 were not used in production.**  
**21P Free - 21 Phthalates were not used in production (BBP, DCHP, DNPP, DPrP, DEP, DNHP, DIBP, DINP, DIDP, DNPP, DIOP, DEHP, DBP, DMP, DNOP, DBZP, DMEP, DIPP, DPP, DIHP, DHNUP)**

**Lead/Heavy Metal Free Tris Free Does not contain conflict minerals**  
**Phthalate and Lead Free to meet CPSC/CPSIA (children's products) environmental and health standards.**

## SUPERIOR PERFORMANCE

Superior Abrasion UV Stability Improved top-coat formulation, which offers better abrasion resistance, and better resistance to cleaners.

## SPECIFIC TREATMENTS

Stain Resistant with Resilience<sup>SR</sup> Abrasion Resistant Anti-Bacterial Anti-Microbial Bleach Cleanable Mildew Resistant Sulfide Stain Resistant

### Resilience<sup>SR</sup>

ENDURING PROTECTION Resilience<sup>SR</sup> represents the latest technology in faux leather and vinyl protection, enhancing performance where it is needed the most.

**Stain Resistance:** With proper care, materials treated with Resilience<sup>SR</sup> can be easily cleaned and will guard against stains, maintaining the desired surface appearance for years to come.

**Anti-Microbial & Anti-Bacterial Protection:** Products treated with Resilience<sup>SR</sup> are engineered to inhibit bacterial growth, as well as fungus, mold and spores, resulting in a more hygienic environment.

**Abrasion Resistance:** Resilience<sup>SR</sup> provides additional wear properties and surface durability to any vinyl or faux leather, thereby increasing the life of the material.

**Resilience<sup>SR</sup>** is not visible, and does not affect the hand of the material. **Resilience<sup>SR</sup>** is engineered to last, even after repeated cleaning and wear. Specify **Resilience<sup>SR</sup>** for the most demanding healthcare and hospitality applications.

## CLEANING INFORMATION

**WS: Water/Solvent Cleaner** – Spot clean with a mild solvent, an upholstery shampoo, or the foam from a mild detergent. When using a solvent or dry cleaning product, follow instructions carefully and clean only in a well-ventilated room. Avoid any product that contains carbon tetrachloride or other toxic materials. With either method, pretest a small area before proceeding. Always rinse promptly with clean water.

**BC: Bleach Cleanable** - 1 part bleach, 9 parts water = 10% bleach, 90% water solution. Do not clean/disinfect fabric for longer than 10 minutes using the 10% bleach solution. Always rinse promptly with clean water after applying the bleach solution. Failure to do so will void any and all warranties.

### Recommended Care and Cleaning Steps

Prompt cleaning is always recommended. Please follow the cleaning guide by type of stain.

**Regular Cleaning and Maintenance (Dirt, Dust, Grime):** Clean the soiled area with mild soap and water, then rinse with fresh water and wipe dry with a clean cloth.

**Food Stains/Oils (Ketchup, Chocolate, Coffee, Tea, Juice):** Wipe affected area with a soft cloth or soft bristle brush using a non-abrasive cleaner, for example Formula 409™ or Fantastik™. Rinse with fresh water and wipe dry.

**Healthcare (Blood, Urine, Betadine):** Clean/disinfect the soiled area with a 10% solution of household bleach and water. It is important to rinse the cleaned area with fresh water after applying the bleach solution.

**Difficult Stains (Eye shadow, Mascara, Lipstick, Crayon):** Clean the soiled area with 50% solution of isopropyl alcohol (rubbing alcohol) and water. It is important to rinse the cleaned area with fresh water after applying the alcohol solution.

*NOTE: The use of commercial vinyl conditioners and protectants is NOT RECOMMENDED.*

*The information in this cleaning guide refers to performance of Resilience in specific tests conducted under laboratory conditions. This information does not imply a specific guarantee and does not relieve the user from the responsibility of the proper and safe use of the product and referenced cleaning agents.*

## ADDITIONAL INFORMATION

**Custom Capabilities:** All patterns can be custom colored. Minimum yardage applies.

^Multiple factors affect fabric durability and appearance retention, including end-user application and proper maintenance. Wyzenbeek results above 100,000 double rubs have not been shown to be a reliable indicator of increased fabric lifespan.

**Digital Swatch Card Color Matching:** Due to color variations on different monitors and color printers, actual swatch colors may vary slightly. Please request a memo sample from Mayer Fabrics to ensure proper color representation.

**Specifications:** Specifications are correct at the time of printing. Current specifications are available on our website.

**For information or assistance with products or services, call us at 800.428.4415 or refer to our website, [www.mayerfabrics.com](http://www.mayerfabrics.com).**



This fabric meets or exceeds these ACT performance guidelines. \*Certification Marks owned by ACT\*



**MAYERFABRICS**