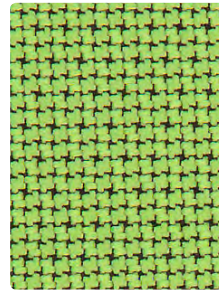


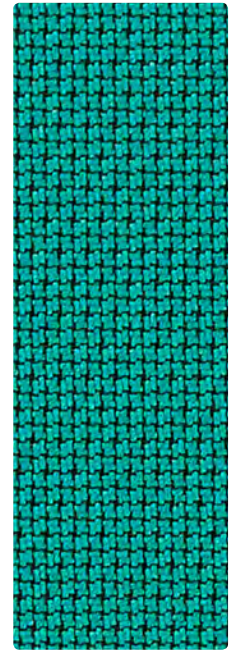
299-002  
Sunshine



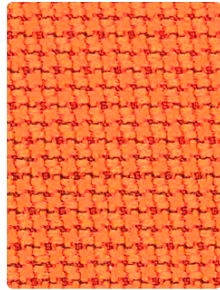
299-027  
Stone



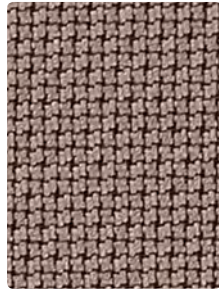
299-003  
Lime



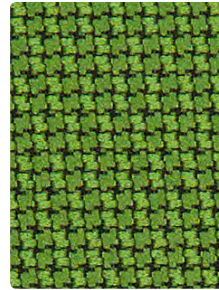
299-053  
Peacock



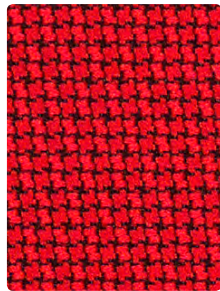
299-009  
Paradise



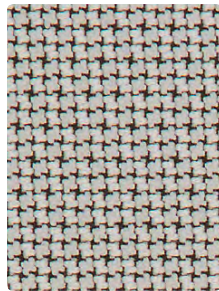
299-020  
Taupe



299-033  
Evergreen



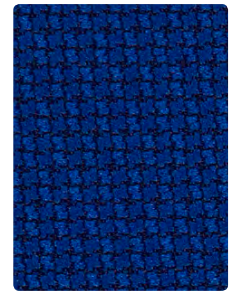
299-021  
Red Baron



299-036  
Dove



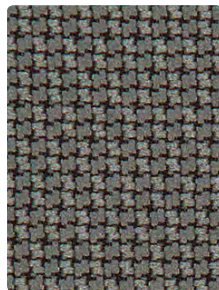
299-043  
Bottle



299-024  
Blue Ribbon



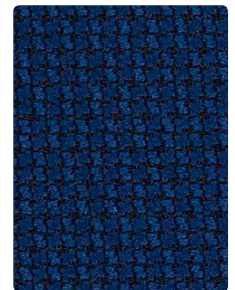
299-011  
Vermillion



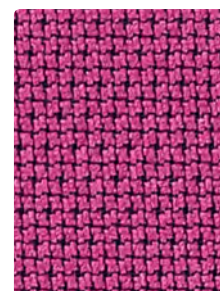
299-026  
Platinum



299-037  
Biscuit



299-054  
Marine



299-015  
Plumberry



299-006  
Slate Black



299-000  
Otter



299-014  
Imperial

**Application**  
Upholstery Seating

**Content**  
100% Polyester

**Width**  
54 inches

**Abrasion** (Wyzenbeek/Cotton Duck)  
Passes 258,000 Double Rubs

**Finish**  
Stain Repellent

**Reduced Environmental Impact**  
GREENGUARD Gold Certified

### TECHNICAL INFORMATION

Content: 100% Polyester

Width: 54"

Backing: Acrylic

Approx. Repeat: Non-matching

Weight: 10.71 oz./linear yard

Finish: Stain Repellent

Directional: No

Railroaded: No

### PERFORMANCE

Surface Abrasion: Heavy Duty ASTM D 4157  
(Wyzenbeek/Cotton Duck)

Pilling Resistance ASTM D 3511

Colorfastness to Crocking AATCC-8

Colorfastness to Light AATCC 16H

### Results

Passes 258,000 Double Rubs Multiple factors affect fabric durability and appearance retention, including end-user application and proper maintenance. Wyzenbeek results above 100,000 double rubs have not been shown to be a reliable indicator of increased fabric lifespan.

Class 4.5

Dry: Class 4 min / Wet: Class 4 min

Class 4 at 40 hours

### FLAMMABILITY

California Technical Bulletin 117-2013

NFPA 260/UFAC Class 1

ASTM E84 (Adhered) Class 2 or B

May comply with California Technical Bulletin 133 when combined with appropriate components.

### REDUCED ENVIRONMENTAL IMPACT

This product is GREENGUARD Gold Certified for low chemical and particle emissions to UL standard UL 2818 and may contribute to LEED certification. For complete information visit [mayerfabrics.com](http://mayerfabrics.com) and [UL.com/gg](http://UL.com/gg).

### CLEANING INFORMATION

S: Solvent

### ADDITIONAL INFORMATION

**Custom Capabilities:** All patterns can be custom colored. Minimum yardage applies.

**Digital Swatch Card Color Matching:** Due to color variations on different monitors and color printers, actual swatch colors may vary slightly. Please request a memo sample from Mayer Fabrics to ensure proper color representation.

**Specifications:** Specifications are correct at the time of printing. Current specifications are available on our website.



This fabric meets or exceeds these ACT performance guidelines.  
\*Certification Marks owned by ACT\*



Water and Stain  
Repellent Finish



This 100% polyester fabric is included in the Underwriter's Laboratory Fabric Recognition Program.  
Additional testing of this U.L. recognized component is not required on approved panels from participating manufacturers.



MAYERFABRICS