

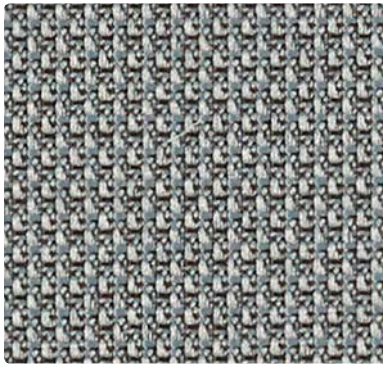
FEDORA

OPTIC

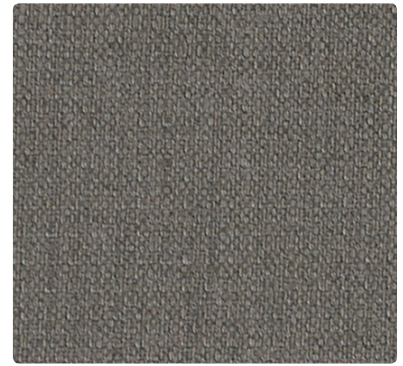
KEY LARGO



621-036
Dapper



424-016
Coal



KL-026
Quarry



621-007
Winter



621-046
Light Grey



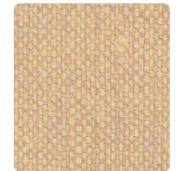
424-017
Fieldstone



424-007
Mushroom



KL-007
Parchment



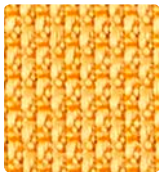
KL-027
Sand



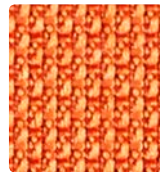
621-002
Topaz



621-019
Tangelo



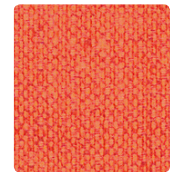
424-019
Tangerine



424-009
Sunrise



KL-022
Jonquil



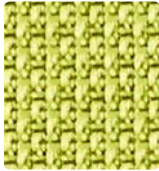
KL-009
Tangerine



621-023
Eucalyptus



621-003
Cactus



424-013
Green Apple



424-023
Springtime



KL-033
Pear



KL-013
Palm



621-011
Tomato



621-001
Ruby



424-005
Mulberry



424-001
Red



KL-011
Raspberry



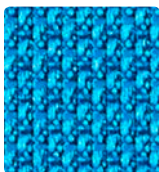
KL-001
Crimson



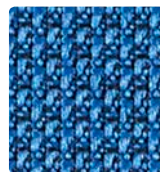
621-043
Aquamarine



621-014
Indigo



424-024
Ocean



424-004
Yale



KL-024
Nassau



KL-004
Ultramarine



621-010
Espresso



621-006
Bitumen



424-000
Brown Bear



424-006
Ash



KL-006
Graphite



KL-016
Ebony



TECHNICAL INFORMATION

Borgo Seating Coordinates

Pattern 54"	Content and Backing	Certifications	Weight/ Linear Yd.	Pattern Repeat	Finish	Abrasion Wyzenbeek	Light- Fastness	Flammability	Cleaning Code
FEDORA <i>Directional</i>	100% Polyester Backing: Polyester	GREENGUARD Gold	17.2 oz.	None	Stain Repellent - PFOA Free	100,000 Double Rubs	40 hours	Cal. 117-2013 NFPA 260/UFAC Class 1 ASTM E84 (Unadhered) Class 1 or A	W
KEY LARGO <i>Directional</i>	86% Vinyl Phthalate Free face, 14% Polyester backing	GREENGUARD	28 oz.	None	Soil & Stain Resistant Top Coat with Ink Resistant Technology	250,000^ Double Rubs	650 hours	Cal. 117-2013 NFPA 260/UFAC Class 1 BIFMA CS-191-53, Section 3 & 4 FMVSS 302 IMO FTP 2010 Part 8, 3.1,3.2	WS, BC, CFC
OPTIC <i>Directional</i>	83% Post-Consumer Recycled Polyester, 17% Polyester Backing: Latex	GREENGUARD Gold	16.5 oz.	0.33" H, 0.20" V	Stain Repellent	185,000^ Double Rubs	40 hours	Cal. 117-2013 NFPA 260/UFAC Class 1 ASTM E84 (Unadhered) Class 1 or A	WS

REDUCED ENVIRONMENTAL IMPACT

These products are GREENGUARD or GREENGUARD Gold Certified for low chemical and particle emissions to UL standard UL 2818 and may contribute to LEED certification. For complete information visit mayerfabrics.com and UL.com/gg.

Key Largo

Phthalate Free Lead/Heavy Metal Free Tris Free Does not contain conflict minerals
Phthalate and Lead Free to meet CPSC/CPSIA (children's products) environmental and health standards.

CARE AND CLEANING INFORMATION

CFC: Coated Fabrics Cleaning – Refer to Mayer website for complete cleaning info.

W: Water-Based Cleaner

WS: Water/Solvent Cleaner

BC: Bleach Cleanable – 1 part bleach, 9 parts water = 10% bleach, 90% water solution. Do not clean/disinfect fabric for longer than 10 minutes using the 10% bleach solution. Always rinse promptly with clean water after applying the bleach solution. Failure to do so will void any and all warranties.

ADDITIONAL INFORMATION

CAL TB 133: All patterns may comply with California Technical Bulletin 133 when combined with appropriate components.

^Abrasion: Multiple factors affect fabric durability and appearance retention, including end-user application and proper maintenance. Wyzenbeek results above 100,000 double rubs have not been shown to be a reliable indicator of increased fabric lifespan.

Custom Capabilities: All patterns can be custom colored. Minimum yardage applies.

Digital Swatch Card Color Matching: Due to color variations on different monitors and color printers, actual swatch colors may vary slightly. Please request a memo sample from Mayer Fabrics to ensure proper color representation.

Specifications: Specifications are correct at the time of printing. Additional specifications are available on our website.



These fabrics meet or exceed these ACT performance guidelines.
*Certification Marks owned by ACT®

Fedora, Optic



Water and Stain
Repellent Finish

Optic



This 100% polyester fabric is included in the Underwriter's Laboratory Fabric Recognition Program. Additional testing of this U.L. recognized component is not required on approved panels from participating manufacturers.

