

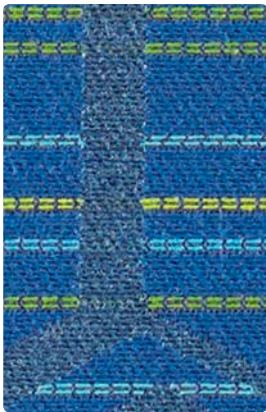
## VIEWPOINT



WC967-007  
Almond



WC967-014  
Caribbean



WC967-004  
Royal



WC967-000  
Mocha

## COSMOPOLITAN



WC968-017  
Oatmeal



WC968-007  
Ecrú



WC968-019  
Saffron



WC968-014  
Horizon



WC968-012  
Lemongrass



WC968-016  
Mist



WC968-006  
Shadow



WC968-002  
Marigold



WC968-009  
Tangerine



WC968-004  
Denim



WC968-003  
Opal



WC968-010  
Granite



WC968-000  
Shiitake

## LAVISH



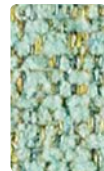
WC969-007  
Ecrú



WC969-002  
Sunflower



WC969-001  
Crimson



WC969-014  
Turquoise



WC969-003  
Avocado



WC969-010  
Pecan



WC969-026  
Cloud



WC969-009  
Ember



WC969-005  
Wildberry



WC969-004  
Lagoon



WC969-013  
Peacock



WC969-000  
Mocha



WC969-016  
Thunder

## REVEAL



WC966-010  
Chestnut



WC966-019  
Saffron



WC966-001  
Blaze



WC966-014  
Aqua



WC966-013  
Limelight



WC966-007  
Taupe



WC966-026  
Zinc



WC966-009  
Bittersweet



WC966-011  
Raspberry



WC966-004  
Denim



WC966-003  
Evergreen



WC966-000  
Espresso



WC966-006  
Charcoal

Additional colors are available. Please refer to the Mayer Fabrics website.

# TECHNICAL INFORMATION

## Kwalu Crypton Coordinates

Pattern 54"	Content and Backing	Certifications	Weight/ Linear Yd.	Pattern Repeat	Finish	Abrasion Wyzenbeek	Light-Fastness	Flammability	Cleaning Code
<b>COSMOPOLITAN</b> <i>Directional</i>	88% Polyester, 12% Nylon Backing: Crypton	GREENGUARD Gold	19.28 oz.	None	Crypton® with Antimicrobial Silver Ion Technology	100,000 Double Rubs	40 hours	Cal. 117-2013 NFPA 260/UFAC Class 1	C, Bleach Cleanable
<b>LAVISH</b> <i>Directional</i>	100% Polyester Backing: Crypton®	GREENGUARD Gold	22.98 oz.	None	Crypton® with Antimicrobial Silver Ion Technology	79,000 Double Rubs	40 hours	Cal. 117-2013 NFPA 260/UFAC Class 1	C, Bleach Cleanable
<b>REVEAL</b> <i>Directional</i>	100% Polyester Backing: Crypton®	GREENGUARD Gold	15.05 oz.	0.25" H, 0.125" V	Crypton® with Antimicrobial Silver Ion Technology	100,000 Double Rubs	40 hours	Cal. 117-2013 NFPA 260/UFAC Class 1	C, Bleach Cleanable
<b>VIEWPOINT</b> <i>Directional</i>	34% Post-Consumer Recycled Polyester, 66% Polyester Backing: Crypton®	GREENGUARD Gold	15.664 oz.	3.75" H, 6.313" V	Crypton® with Antimicrobial Silver Ion Technology	60,000 Double Rubs	40 hours	Cal. 117-2013 NFPA 260/UFAC Class 1	C, Bleach Cleanable

### REDUCED ENVIRONMENTAL IMPACT

These products are GREENGUARD Gold Certified for low chemical and particle emissions to UL standard UL 2818 and may contribute to LEED certification. For complete information visit [mayerfabrics.com](http://mayerfabrics.com) and [UL.com/gg](http://UL.com/gg).

### CARE AND CLEANING INFORMATION

C: Crypton® Cleaning

Bleach Cleanable – 1 part bleach, 9 parts water = 10% bleach, 90% water solution. Do not clean/disinfect fabric for longer than 10 minutes using the 10% bleach solution. Always rinse promptly with clean water after applying the bleach solution. Failure to do so will void any and all warranties.

For additional care and cleaning information by pattern, please refer to the Mayer Fabrics website.

### ADDITIONAL INFORMATION

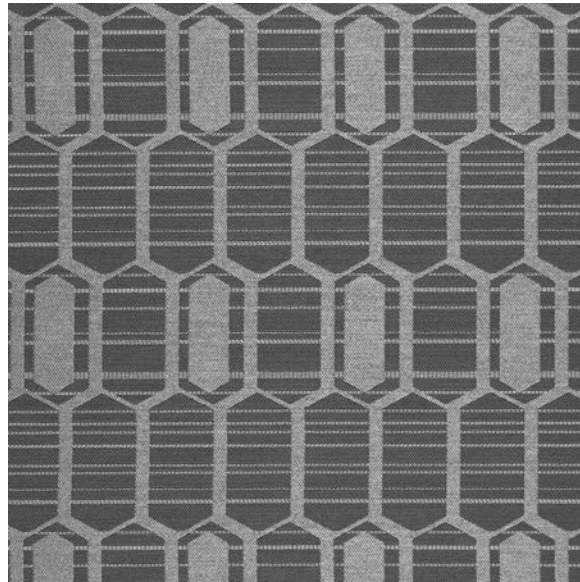
**CAL TB 133:** All patterns may comply with California Technical Bulletin 133 when combined with appropriate components.

**Custom Capabilities:** All patterns can be custom colored. Minimum yardage applies.

**Specifications:** Specifications are correct at the time of printing. Additional specifications are available on our website.



These fabrics meet or exceed these ACT performance guidelines.  
\*Certification Marks owned by ACT\*



VIEWPOINT – Approx. Repeat: 3.75" H, 6.313" V

kwalu®

Designed to Last®

†877-MY KWALU  
[www.kwalu.com](http://www.kwalu.com)



MAYERFABRICS

†317.267.2626 or 800.428.4415 †317.267.2629 or 877.7SAMPLE  
[www.mayerfabrics.com](http://www.mayerfabrics.com)

©2017 Mayer-Paetz, Inc.

KCCCD  
50917