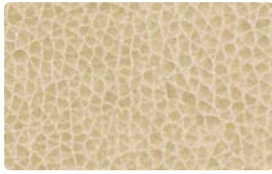


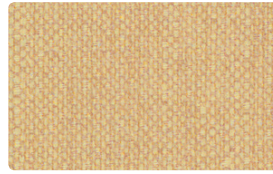
COATED FABRICS



PALERMO (PU)
PL-007 Ecru



BOLERO (PU)
BO-007 Doe



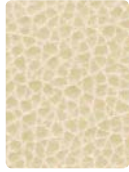
KEY LARGO (PVC)
KL-017 Khaki



CARESSA (PVC)
CA-027 Buff



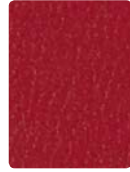
BOLERO (PU)
BO-017 Cream



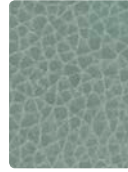
PALERMO (PU)
PL-017 Ivory



PALERMO (PU)
PL-009 Mango



BOLERO (PU)
BO-011 Lipstick



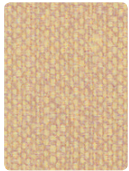
PALERMO (PU)
PL-014 Aqua



BOLERO (PU)
BO-014 Cerulean



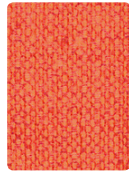
PALERMO (PU)
PL-026 Dove



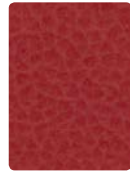
KEY LARGO (PVC)
KL-027 Sand



PALERMO (PU)
PL-002 Butter



KEY LARGO (PVC)
KL-009 Tangerine



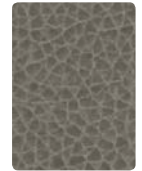
PALERMO (PU)
PL-011 Poppy



CARESSA (PVC)
CA-084 Aqua



CARESSA (PVC)
CA-044 Cadet



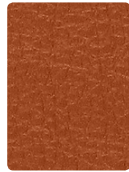
PALERMO (PU)
PL-016 Storm



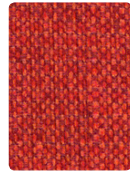
CARESSA (PVC)
CA-047 Doe



BOLERO (PU)
BO-012 Butterscotch



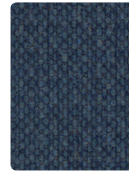
CARESSA (PVC)
CA-019 Bittersweet



KEY LARGO (PVC)
KL-019 Cayenne



BOLERO (PU)
BO-023 Aqua



KEY LARGO (PVC)
KL-004 Ultramarine



KEY LARGO (PVC)
KL-026 Quarry



PALERMO (PU)
PL-027 Buff



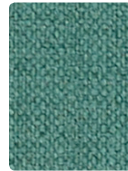
CARESSA (PVC)
CA-002 Butterscotch



BOLERO (PU)
BO-009 Terra Cotta



BOLERO (PU)
BO-001 Paprika



KEY LARGO (PVC)
KL-024 Nassau



PALERMO (PU)
PL-004 Sapphire



CARESSA (PVC)
CA-026 Granite



KEY LARGO (PVC)
KL-020 Sandstone



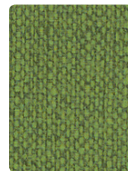
CARESSA (PVC)
CA-029 Ochre



CARESSA (PVC)
CA-009 Red Clay



BOLERO (PU)
BO-005 Orchid



KEY LARGO (PVC)
KL-013 Palm



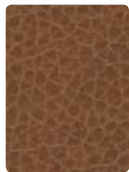
BOLERO (PU)
BO-004 Regatta



BOLERO (PU)
BO-016 Charcoal



PALERMO (PU)
PL-020 Otter



PALERMO (PU)
PL-019 Tawny



PALERMO (PU)
PL-001 Ruby



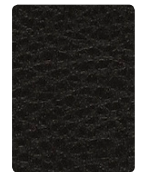
KEY LARGO (PVC)
KL-015 Crocus



PALERMO (PU)
PL-003 Parsley



CARESSA (PVC)
CA-014 Admiral



CARESSA (PVC)
CA-006 Black



BOLERO (PU)
BO-010 Java



CARESSA (PVC)
CA-050 Saddle



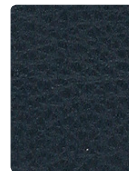
CARESSA (PVC)
CA-041 Burgundy



CARESSA (PVC)
CA-005 Aubergine



BOLERO (PU)
BO-003 Sherwood



CARESSA (PVC)
CA-004 Navy



BOLERO (PU)
BO-006 Black

Additional colors are available. Please refer to the Mayer Fabrics website.

TECHNICAL INFORMATION

Coated Fabrics

Pattern	54" Content and Backing	Certifications	Weight/ Linear Yd.	Pattern Repeat	Finish	Abrasion Wyzenbeek	Light- Fastness	Flammability	Cleaning Code
BOLERO	62% Polyurethane face - PVC FREE, 38% Polyester backing	GREENGUARD	20 oz.	None	WRITE AWAY™, Soil & Stain Resistant Top Coat with Ink Resistant Technology	250,000^ Double Rubs	200 hours	Cal. 117-2013 NFPA 260/UFAC Class 1 ASTM E84 (Unadhered) Class 1 or A BIFMA CS-191-53, Section 3 FMVSS 302 IMO A.652(16) 8.2 IMO FTP 2010 Part 8, 3.1	WS, BC, CFC
CARESSA FR	80% Vinyl Phthalate Free face, 20% Polyester backing	GREENGUARD	29 oz.	None	Soil & Stain Resistant Top Coat with Ink Resistant Technology	650,000^ Double Rubs	1000 hours	Cal. 117-2013 NFPA 260/UFAC Class 1 ASTM E84 (Adhered & Unadhered) Class 1 or A Boston Fire Dept. Code FMVSS 302 IMO A.652(16) 8.2 & 8.3 IMO FTP 2010 Part 8, 3.1 & 3.2 NY & NJ Port Authority	WS, BC, CFC
KEY LARGO <i>Directional</i>	86% Vinyl Phthalate Free face, 14% Polyester backing	GREENGUARD	28 oz.	None	Soil & Stain Resistant Top Coat with Ink Resistant Technology	250,000^ Double Rubs	650 hours	Cal. 117-2013 NFPA 260/UFAC Class 1 BIFMA CS-191-53, Section 3 & 4 FMVSS 302 IMO FTP 2010 Part 8, 3.1,3.2	WS, BC, CFC
PALERMO	62% Polyurethane face - PVC FREE, 38% Polyester backing	GREENGUARD	20 oz.	Non- Matching	WRITE AWAY™, Soil & Stain Resistant Top Coat with Ink Resistant Technology	250,000^ Double Rubs	200 hours	Cal. 117-2013 NFPA 260/UFAC Class 1 ASTM E84 (Unadhered) Class 1 or A BIFMA CS-191-53, Section 3 FMVSS 302 IMO A.652(16) 8.2 IMO FTP 2010 Part 8, 3.1	WS, BC, CFC

REDUCED ENVIRONMENTAL IMPACT

These products are GREENGUARD Certified for low chemical and particle emissions to UL standard UL 2818 and may contribute to LEED certification. For complete information visit mayerfabrics.com and UL.com/gg.

Bolero
PVC FREE Lead Free Phthalate Free Heavy Metal Free Formaldehyde Free Low VOC BPA Free Non-Toxic
99%+ of all Water and Raw Materials used in production are reclaimed and recycled Energy and Water Efficient Production

Caressa FR
Tris Free Phthalate Free

Key Largo
Phthalate Free Lead/Heavy Metal Free Tris Free Does not contain conflict minerals
Phthalate and Lead Free to meet CPSC/CPSIA (children's products) environmental and health standards

Palermo
Lead Free to Comply with CAL Prop 65 Free of all Phthalates listed in CAL Prop 65 BPA Free/TRIS Free/Formaldehyde Free
Does not contain Conflict Minerals

CARE AND CLEANING INFORMATION

CFC: Coated Fabrics Cleaning – Refer to Mayer website for complete cleaning info.

WS: Water/Solvent Cleaner

BC: Bleach Cleanable – 1 part bleach, 9 parts water = 10% bleach, 90% water solution. Do not clean/disinfect fabric for longer than 10 minutes using the 10% bleach solution. Always rinse promptly with clean water after applying the bleach solution. Failure to do so will void any and all warranties.

ADDITIONAL INFORMATION

CAL TB 133: All patterns may comply with California Technical Bulletin 133 when combined with appropriate components.

^Abrasion: Multiple factors affect fabric durability and appearance retention, including end-user application and proper maintenance. Wyzenbeek results above 100,000 double rubs have not been shown to be a reliable indicator of increased fabric lifespan.

Custom Capabilities: All patterns can be custom colored. Minimum yardage applies.

Specifications: Specifications are correct at the time of printing. Additional specifications are available on our website.



These fabrics meet or exceed these ACT performance guidelines.
Certification Marks owned by ACT

logiflex

