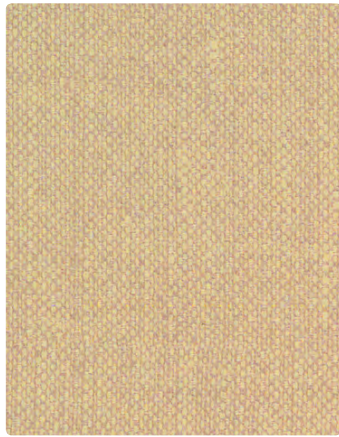


KEY LARGO



KL-027
Sand



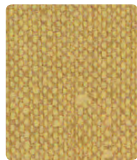
KL-009
Tangerine



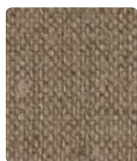
KL-024
Nassau



KL-033
Pear



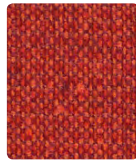
KL-012
Wheat



KL-020
Sandstone



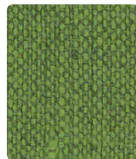
KL-026
Quarry



KL-019
Cayenne



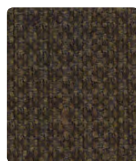
KL-004
Ultramarine



KL-013
Palm



KL-010
Toast



KL-000
Chocolate



KL-006
Graphite

CIRQUE



CI-007
Driftwood



CI-024
Aqua



CI-003
Avocado



CI-016
Dusk

SILVERWEAVE



SW-007
Camel



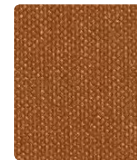
SW-039
Bittersweet



SW-044
Calypso



SW-053
Spring



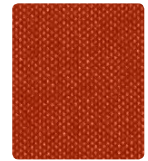
SW-002
Sienna



SW-036
Pewter



SW-026
Zinc



SW-019
Tangerine



SW-004
Indigo



SW-013
Willow



SW-010
Walnut



SW-020
Mica



SW-006
Graphite

TECHNICAL INFORMATION

Vinyl Coordinates

Pattern 54"	Content and Backing	Certifications	Weight/ Linear Yd.	Pattern Repeat	Finish	Abrasion Wyzenbeek	Light- Fastness	Flammability	Cleaning Code
CIRQUE <i>Directional</i>	81% Vinyl face, 19% Polyester backing Backing: 100% Polyester	GREENGUARD	30 oz.	18" H, 18" V	Soil and stain resistant top coat with ink resistant technology	100,000 Double Rubs	1000 hours	Cal. 117-2013 NFPA 260/UFAC Class 1 Boston Fire Dept. Code FAA/FAR 25.853(a) & Appd. F Part I(a)(ii) FMVSS 302 IMO FTP 2010 Part 8, 3.1 & 3.2 NY&NJ Port Authority Fed. Test Method Stnd. No. 191A, Method 5903.1	Bleach cleanable, Refer to Mayer website for complete cleaning info
KEY LARGO <i>Directional</i>	86% Vinyl face, 14% Polyester backing – Phthalate (21P) Free Backing: 100% Polyester Knit	GREENGUARD	28 oz.	None	Soil and stain resistant top coat with ink resistant technology	250,000^ Double Rubs	650 hours	Cal. 117-2013 NFPA 260/UFAC Class 1 FMVSS 302 IMO FTP 2010 Part 8, 3.1 & 3.2	WS, Bleach Cleanable
SILVERWEAVE <i>Directional</i>	70% Vinyl face, 30% Polyester backing Backing: 100% Polyester	GREENGUARD	30 oz.	None	Soil and stain resistant top coat	930,000^ Double Rubs	1000 hours	Cal. 117-2013 NFPA 260/UFAC Class 1 Boston Fire Dept. Code FAA/FAR 25.853(a) & Appd. F Part I(a)(ii) FMVSS 302 IMO FTP 2010 Part 8, 3.1 & 3.2 NFPA 701 (small scale) NY&NJ Port Authority ASTM E 662 Fed. Test Method Stnd. No. 191A, Method 5903.1	Bleach cleanable, Refer to Mayer website for complete cleaning info

REDUCED ENVIRONMENTAL IMPACT

These products are GREENGUARD Certified or GREENGUARD Gold Certified for low chemical and particle emissions to UL standard UL 2818 and may contribute to LEED certification. For complete information visit mayerfabrics.com and UL.com/gg.

CARE AND CLEANING INFORMATION

WS: Water/Solvent Cleaner

BC: Bleach Cleanable – 1 part bleach, 9 parts water = 10% bleach, 90% water solution. Do not clean/disinfect fabric for longer than 10 minutes using the 10% bleach solution. Always rinse promptly with clean water after applying the bleach solution. Failure to do so will void any and all warranties.

For additional care and cleaning information by pattern, please refer to the Mayer Fabrics website.

ADDITIONAL INFORMATION

CAL TB 133: All patterns may comply with California Technical Bulletin 133 when combined with appropriate components.

^Abrasion: Multiple factors affect fabric durability and appearance retention, including end-user application and proper maintenance. Wyzenbeek results above 100,000 double rubs have not been shown to be a reliable indicator of increased fabric lifespan.

Custom Capabilities: All patterns can be custom colored. Minimum yardage applies.

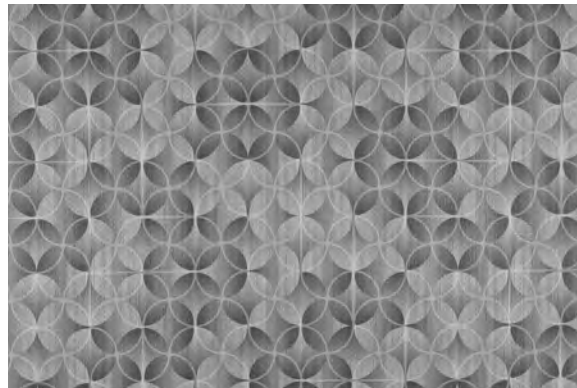
Digital Swatch Card Color Matching: Due to color variations on different monitors and color printers, actual swatch colors may vary slightly. Please request a memo sample from Mayer Fabrics to ensure proper color representation.

Specifications: Specifications are correct at the time of printing. Additional specifications are available on our website.

For information or assistance with products or services, please refer to the Mayer Fabrics website.



These fabrics meet or exceed these ACT performance guidelines.
Certification Marks owned by ACT



CIRQUE – Repeat: 18" H, 18" V

logiflex

