



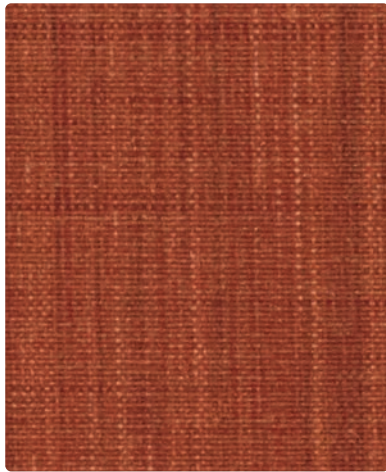
## Grade 12 Fabrics

MTS à la mode Collection  
Chic, Couturier, Elegance

7100 Industrial Drive  
Temperance, Michigan 48182

(734) 847-3875  
FAX: (734) 847-0993  
www.mtsseating.com

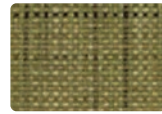
### Couturier



CTR120  
Curry



CTR121  
Raspberry



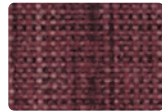
CTR122  
Basil



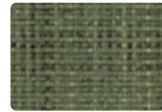
CTR123  
Tan



CTR124  
Earth



CTR125  
Plum



CTR126  
Emerald



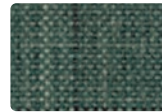
CTR127  
Mocha



CTR128  
Granite



CTR129  
Denim



CTR130  
Teal



CTR131  
Espresso

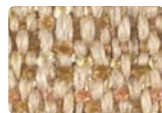


CTR132  
Soot

### Elegance



ELG120  
Persimmon



ELG121  
Wheat



ELG122  
Celadon



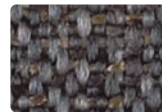
ELG123  
Opal



ELG124  
Mushroom



ELG125  
Rouge



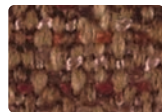
ELG126  
Indigo



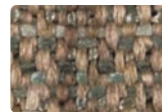
ELG127  
Bronze



ELG128  
Smoke



ELG129  
Raisin



ELG130  
Fog



ELG131  
Mink



ELG132  
Charcoal

### Chic



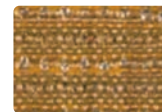
CHC120  
Mango



CHC121  
Flame



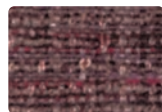
CHC122  
Aloe



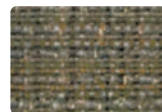
CHC123  
Topaz



CHC124  
Hemp



CHC125  
Plum



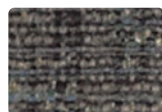
CHC126  
Forest



CHC127  
Grain



CHC128  
Morel



CHC129  
Azure



CHC130  
Eucalyptus



CHC131  
Sable



CHC132  
Onyx



# Grade 12 Fabrics

MTS à la mode Collection  
Chic, Couturier, Elegance

### Specifications

	Chic	Couturier	Elegance
Content	100% Polyester	100% Polyester	100% Polyester
Weight	16.88 oz./lin yd Backed	9.13 oz./lin yd Backed	18.91 oz./lin yd Backed
Fabric Treatments	Stain Repellent	Stain Repellent	Stain Repellent

### Performance Tests and Characteristics

	Chic	Couturier	Elegance
Abrasion	Exceeds 50,000 Double Rubs	Passes 295,000 <sup>^</sup> Double Rubs	Passes 145,000 <sup>^</sup> Double Rubs
Lightfastness	40 hours Class 4	40 hours Class 4	40 hours Class 4
Flammability*	California Technical Bulletin 117-2013 NFPA 260/UFAC Class 1	California Technical Bulletin 117-2013 NFPA 260/UFAC Class 1	California Technical Bulletin 117-2013 NFPA 260/UFAC Class 1
Cleaning Code	S	S	S

\*Materials may comply with California 133 when used in conjunction with MTS FLAMEbloc® foam padding. Contact MTS for detailed information. The term "flammability" and any corresponding data refer to typical performance in the tests indicated and should not be construed to imply the behavior of this or any other material under actual fire conditions.

These products are GREENGUARD Gold Certified for low chemical and particle emissions to UL standard UL 2818 and may contribute to LEED certification. For complete information visit [mayerfabrics.com](http://mayerfabrics.com) and [UL.com/gg](http://UL.com/gg). Dye lots may vary slightly from samples shown.

Cleaning Code/  
Maintenance (S) Solvent Cleaner - Spot clean, using a mild water-free solvent or dry cleaning product. Clean only in a well-ventilated room and avoid any product containing carbon tetrachloride or other toxic materials. Pretest a small area before proceeding. Always rinse promptly with clean water.

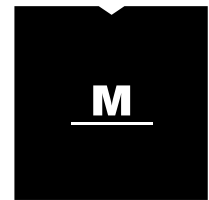
The textile industry recommends professional cleaning when overall cleaning is necessary. These cleaning instructions should be called to the attention of your professional cleaner.

**Before treating any stain, test the appropriate stain-removing product (including water, if you plan to use it) on a hidden area to make certain the fabric and color will not be damaged by the remover.**

This cleaning information is not a guarantee and does not relieve the user from the responsibility of the proper and safe use of the product and all cleaning agents. <sup>^</sup>Abrasion: Multiple factors affect fabric durability and appearance retention, including end-user application and proper maintenance. Wyzenbeek results above 100,000 double rubs have not been shown to be a reliable indicator of increased fabric lifespan.



These fabrics meet or exceed these ACT performance guidelines.  
\*Certification Marks owned by ACT\*



MAYERFABRICS

# TexTile3D

by Mayer Fabrics

For additional colors, samples and specification information, please refer to the Mayer TexTile3D link at [mtsseating.com](http://mtsseating.com)  
©2015 Mayer-Paetz, Inc.

MF0615  
MTSALMCCD  
7/15