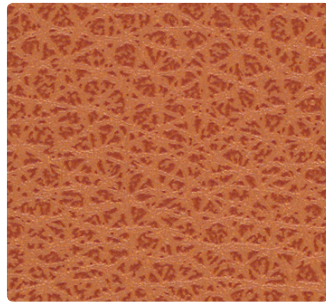
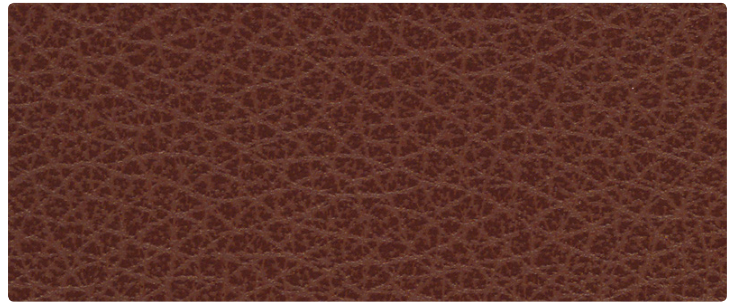


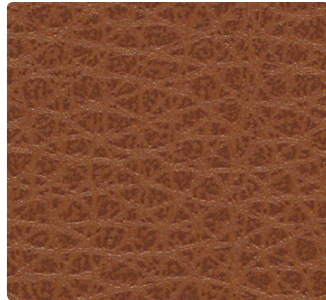
Ink Resistant Technology



MK-009 Terra Cotta



MK-019 Henna



MK-010 Saddle



MK-027 Ivory



MK-017 Buff



**Application**  
Upholstery Seating

**Content**  
86% Vinyl **Phthalate Free** face,  
14% Polyester Backing

**Width**  
54 inches

**Abrasion** (Wyzenbeek/Cotton Duck)  
Exceeds 250,000 Double Rubs

**Finish**  
Soil & Stain Resistant Top Coat  
with Ink Resistant Technology

**Reduced Environmental Impact**  
**GREENGUARD Certified**



MK-001 Geranium



MK-007 Buckskin



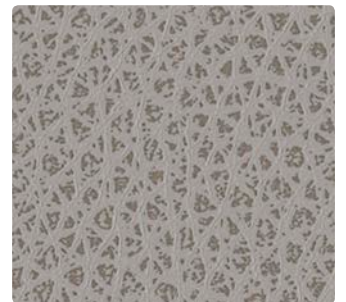
MK-026 Cliff



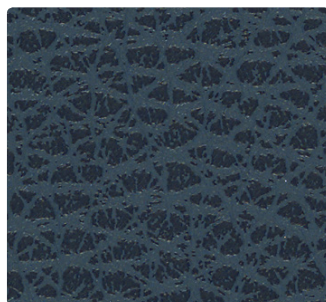
MK-014 Harbor



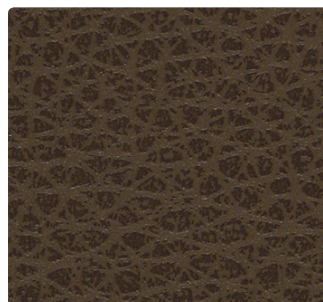
MK-020 Cocoa



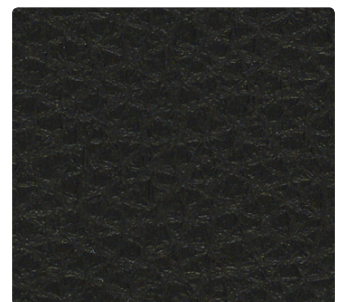
MK-036 Pebble



MK-004 Sapphire



MK-000 Bark



MK-006 Angus

**TECHNICAL INFORMATION**

Content: 86% Vinyl **Phthalate Free** face, 14% Polyester backing  
 Width: 54"  
 Approx. Repeat: Non-Matching

Weight: 28 oz./linear yard  
 Finish: Soil & Stain Resistant Top Coat with Ink Resistant Technology  
 Directional: No Railroaded: No

**PERFORMANCE**

Surface Abrasion: Heavy Duty CFFA-1A/Method ASTM D4157  
 (Wyzenbeek/Cotton Duck)

Colorfastness to Crocking AATCC 8  
 Colorfastness to Light AATCC 16, Option 3

**Results**

Exceeds 250,000 Double Rubs Multiple factors affect fabric durability and appearance retention, including end-user application and proper maintenance. Wyzenbeek results above 100,000 double rubs have not been shown to be a reliable indicator of increased fabric lifespan.

Dry: Class 4 min / Wet: Class 4 min  
 Class 4.5 min at 650 hours – Suitable for marine use

**FLAMMABILITY**

California Technical Bulletin 117-2013  
 NFPA 260/UFAC Class 1  
 BIFMA CS-191-53, Section 3 & 4  
 FMVSS 302  
 IMO FTP 2010 Code MSC.307(88), Part 8, 3.1 & 3.2  
 May comply with California Technical Bulletin 133 when combined with appropriate components.

**REDUCED ENVIRONMENTAL IMPACT**

This product is GREENGUARD Certified for low chemical and particle emissions to UL standard UL 2818 and may contribute to LEED certification. For complete information visit [mayerfabrics.com](http://mayerfabrics.com) and [UL.com/gg](http://UL.com/gg).

**Phthalate Free Lead/Heavy Metal Free Tris Free**

**SUPERIOR PERFORMANCE**

Anti-Bacterial Anti-Microbial Bleach Cleanable Mildew Resistant Sulfide Stain Resistant

**CLEANING INFORMATION**

CFC: Coated Fabrics Cleaning – Refer to Mayer website for complete cleaning info.

WS: Water/Solvent Cleaner

BC: Bleach Cleanable – 1 part bleach, 9 parts water = 10% bleach, 90% water solution. Do not clean/disinfect fabric for longer than 10 minutes using the 10% bleach solution. Always rinse promptly with clean water after applying the bleach solution. Failure to do so will void any and all warranties

**DYE TRANSFER DISCLAIMER**

Certain clothing and accessory dyes (such as those used on denim jeans) may migrate to lighter colors. This phenomenon is increased by humidity and temperature and is irreversible. Mayer Fabrics will not assume responsibility for dye transfer caused by external contaminants. Please check compatibility when using this product in combination with painted or varnished surfaces.

**ADDITIONAL INFORMATION**

**Custom Capabilities:** All patterns can be custom colored. Minimum yardage applies.

**Specifications:** Specifications are correct at the time of printing. Additional specifications are available on our website.



This fabric meets or exceeds these ACT performance guidelines.  
 \*Certification Marks owned by ACT®

