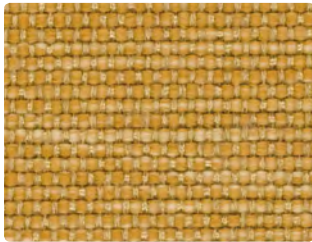




459-007  
Oatmeal



459-002  
Saffron



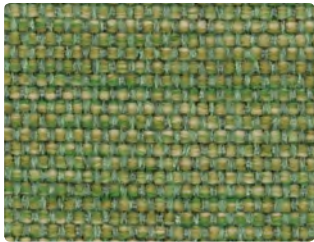
459-013  
Spring



459-017  
Mocha



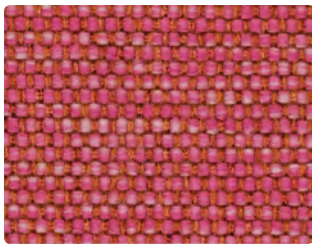
459-009  
Mandarin



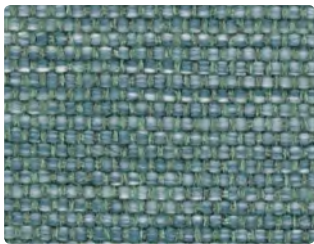
459-003  
Meadow



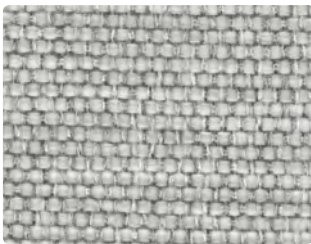
459-000  
Chocolate



459-011  
Rosewood



459-023  
Sea



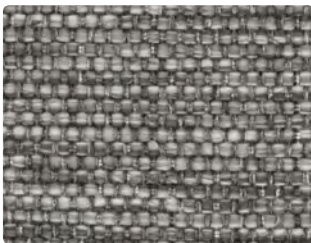
459-036  
Silver



459-001  
Cranberry



459-014  
Peacock



459-026  
Metal



459-008  
Plum



459-024  
Sky



459-016  
Storm



459-006  
Onyx



459-004  
Indigo

**Application**  
Upholstery Seating

---

**Content**  
70% Polypropylene, 30% Polyester

---

**Width**  
54 inches / 137 cm

---

**Abrasion** (Wyzenbeek/Wire Screen)  
Exceeds 100,000 Double Rubs

---

**Finish**  
Inherently Cleanable

---

**Reduced Environmental Impact**  
GREENGUARD Gold Certified  
OEKO-TEX® Certified

**TECHNICAL INFORMATION**

Content: 70% Polypropylene, 30% Polyester

Width: 54 inches / 137 cm

Backing: Latex

Approx. Repeat: None

Weight: 16.04 oz./linear yard / 497.29 g/lm

Finish: Inherently Cleanable (refer to mayerfabrics.com/vivalife)

Directional: Yes

Railroaded: No

**PERFORMANCE**Surface Abrasion: Heavy Duty ASTM D4157  
(Wyzenbeek/Wire Screen)

Pilling Resistance ASTM D3511

Colorfastness to Crocking AATCC 8

Colorfastness to Light AATCC 16 Option 3

**Results**

Exceeds 100,000 Double Rubs

Class 4

Dry: Grade 4 / Wet: Grade 4

Grade 5 at 40 hours

**FLAMMABILITY**

California Technical Bulletin 117-2013

NFPA 260/UFAC Class 1

May comply with California Technical Bulletin 133 when combined with appropriate components.

**REDUCED ENVIRONMENTAL IMPACT****This product is GREENGUARD Gold Certified for low chemical and particle emissions to UL standard UL 2818 and may contribute to LEED certification. For complete information visit mayerfabrics.com and UL.com/gg.**

OEKO-TEX® Certified

**CLEANING INFORMATION**

W: Water-Based Cleaner

BC: Bleach Cleanable – 1 part bleach, 9 parts water = 10% bleach, 90% water solution. **Do not clean/disinfect fabric for longer than 10 minutes using the 10% bleach solution. Always rinse promptly with clean water after applying the bleach solution. Failure to do so will void any and all warranties.**

IC: Inherently Cleanable

Havana can be cleaned with water, water-based detergent, bleach, and hydrogen peroxide cleaner.

Most stains can be removed, ranging from soda, red wine, chocolate, ketchup, oil, blood, pencil, lipstick, pen, ink, and permanent marker.

**For additional care and cleaning information, please refer to mayerfabrics.com/vivalife.****DYE TRANSFER DISCLAIMER**

Certain clothing and accessory dyes (such as those used on denim jeans) may migrate to lighter colors. This phenomenon is increased by humidity and temperature and is irreversible. Mayer Fabrics will not assume responsibility for dye transfer caused by external contaminants. Please check compatibility when using this product in combination with painted or varnished surfaces.

**ADDITIONAL INFORMATION****Custom Capabilities:** All patterns can be custom colored. Minimum yardage applies.**Vivalife:** For additional Vivalife information, please refer to mayerfabrics.com/vivalife.**Digital Swatch Card Color Matching:** Due to color variations on different monitors and color printers, actual swatch colors may vary slightly. Please request a memo sample from Mayer Fabrics to ensure proper color representation.**Specifications:** Specifications are correct at the time of printing. Current specifications are available on our website.This fabric meets or exceeds these ACT performance guidelines.  
\*Certification Marks owned by ACT®**MAYERFABRICS**