

WRITE AWAY COLLECTION

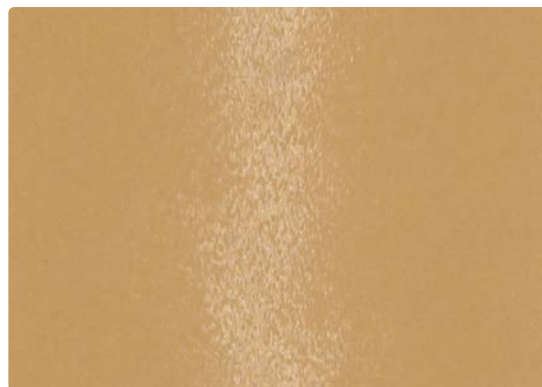


PALERMO

BERKSHIRE



PL-007 Ecru



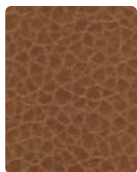
BE-002 Camel



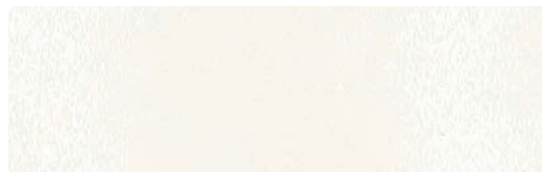
PL-002 Butter



PL-009 Mango



PL-019 Tawny



BE-017 Ivory



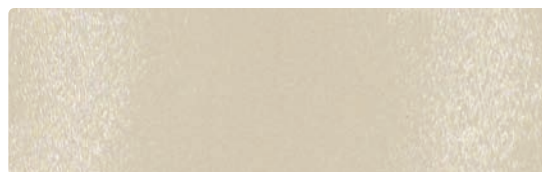
PL-011 Poppy



PL-001 Ruby



PL-004 Sapphire



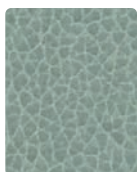
BE-007 Natural



PL-013 Moss



PL-003 Parsley



PL-014 Aqua



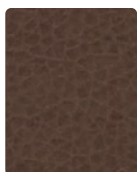
BE-010 Rawhide



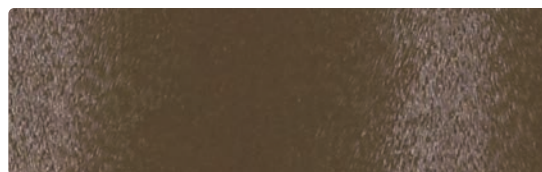
PL-017 Ivory



PL-020 Otter



PL-010 Saddle



BE-000 Sable



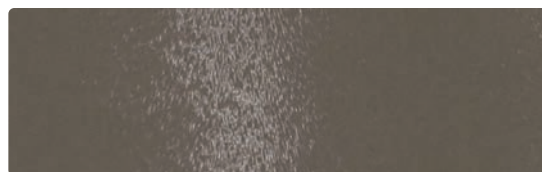
PL-027 Buff



PL-030 Clove



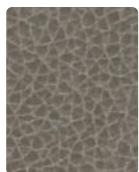
PL-000 Java



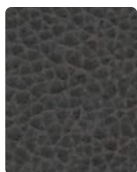
BE-016 Shadow



PL-026 Dove



PL-016 Storm



PL-006 Ebony



BE-006 Ebony



CASCADE

RIFT

LONGHORN



CE-007 Ecrú



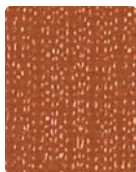
RI-007 Bamboo



LO-007 Khaki



CE-002 Saffron



CE-009 Tangerine



RI-002 Lemon



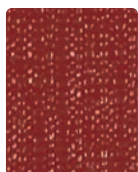
RI-019 Persimmon



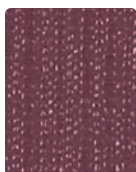
LO-001 Berry



LO-009 Brandy



CE-001 Scarlet



CE-005 Magenta



RI-009 Coral



RI-001 Sumac



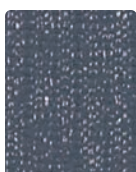
LO-002 Caramel



LO-003 Oregano



CE-003 Jade



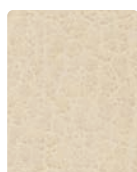
CE-004 Atlantic



RI-014 Sky



RI-004 Sapphire



LO-027 Parchment



LO-017 Buff



CE-017 Glacier



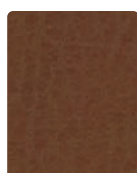
CE-010 Umber



RI-003 Palm



RI-000 Walnut



LO-020 Tawny



LO-010 Chestnut



CE-026 Pewter



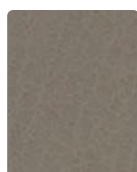
CE-000 Bark



RI-017 Birch



RI-010 Sandalwood



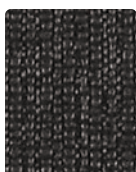
LO-026 Greystone



LO-016 Shadow



CE-016 Seal



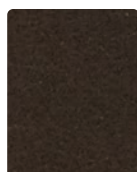
CE-006 Jet



RI-016 Driftwood



RI-006 Ebony



LO-000 Espresso

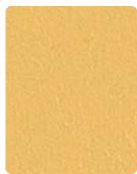


LO-006 Black

BOLERO



BO-022 Straw



BO-002 Jonquil



BO-009 Terra Cotta



BO-021 Flame



BO-001 Paprika



BO-011 Lipstick



BO-005 Orchid



BO-014 Cerulean



BO-004 Regatta



BO-012 Butterscotch



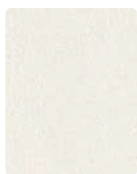
BO-013 Lime



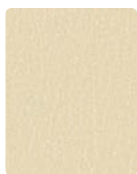
BO-003 Sherwood



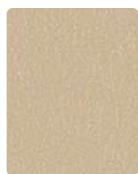
BO-023 Aqua



BO-027 Porcelain



BO-017 Cream



BO-007 Doe



BO-020 Toast



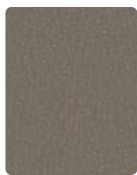
BO-030 Mojave



BO-010 Java



BO-000 Espresso



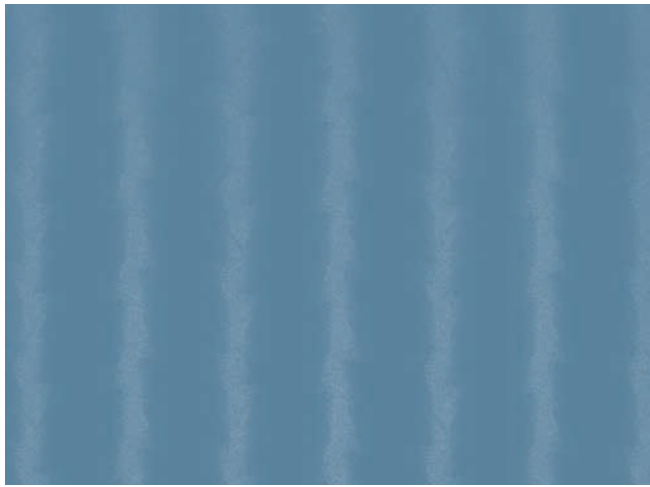
BO-026 Cliff



BO-016 Charcoal



BO-006 Black



BERKSHIRE - Repeat: Non-Matching

CLEANING INFORMATION

WS: Water/Solvent Cleaner – Spot clean, with a mild solvent, an upholstery shampoo, or the foam from a mild detergent. When using a solvent or dry cleaning product, follow instructions carefully and clean only in a well-ventilated room. Avoid any product that contains carbon tetrachloride or other toxic materials. With either method, pretest a small area before proceeding.

BC: Bleach Cleanable - 1 part bleach, 4 parts water = 20% bleach, 80% water solution. Always rinse promptly with clean water after applying the bleach solution. Prompt cleaning is always recommended. Recommended cleaning steps are listed by type of stain.

Regular Cleaning and Maintenance (Dirt, Grime): Clean the soiled area with mild soap and water, then rinse with fresh water and wipe dry with a clean cloth.

Food Stains/Oils (Mustard, Ketchup, Chocolate, Coffee/Tea, Salad Dressing): Wipe the affected area with a soft cloth with appropriate pressure. If some stain persists, clean with mild soap and water. Rinse with fresh water and wipe dry. For stubborn stains spot clean with a 70% dilution of isopropyl alcohol and water and wipe. Rinse with fresh water and wipe dry.

Healthcare/Disinfection (Blood, Urine, Betadine): Wipe the affected area with a soft cloth with appropriate pressure. If some stain persists, spray it with a 70% dilution of isopropyl alcohol and water and wipe. Rinse with fresh water and wipe dry. *Disinfection:* This material withstands a 20% solution of household bleach and water. It is important to rinse the clean area with fresh water after applying the bleach solution.

Ink Marks/Graffiti (Ball Point Pen, Permanent Marker): Rub the affected area with a dry soft cloth with firm pressure. If some stain is still present spray it with a 70% dilution of isopropyl alcohol and water and wipe. Rinse with fresh water and wipe dry. Note: Removal of ink, particularly permanent marker, may vary depending on the period of time that the ink sets in. While this material offers excellent protection, full removal is not guaranteed.

Denim Dye Transfer (Blue Jeans): This material is designed to withstand the transfer of most types of indigo dye. In the case that faint dye transfer is visible, this can typically be removed with a 70% dilution of isopropyl alcohol and water. Note: Removal of indigo dye, particularly from wet jeans, may vary depending on the type of denim. While this material offers excellent protection, full removal is not guaranteed.

NOTE: The information in this cleaning guide refers to performance in specific tests conducted under laboratory conditions. This information is not a guarantee that every stain will be removed completely and some residual ghosting may be present after all the cleaning steps are followed.




Results may vary under actual conditions.

This information is not a guarantee and does not relieve the user from the responsibility of the proper and safe use of the product and all cleaning agents. The use of certain agents can be harmful to the surface appearance and lifespan of polyurethane. Mayer Fabrics, its agents, and assigns assume no responsibility resulting from the use of such cleaning agents to the polyurethane surface. Please check compatibility when using this product in combination with painted or varnished surfaces.

TECHNICAL INFORMATION

Write Away Collection

*Certification Marks Owned by ACT.

Pattern 54"	Content and Backing	GREENGUARD Certified	Weight/ Linear Yd	Pattern Repeat	Finish	Abrasion  * Wyzenbeek	Light  * Fastness	Flammability  *	Cleaning Code
BERKSHIRE <i>Directional</i>	100% Polyurethane - PVC FREE Backing: 100% Polyester Knit	Certified	20 oz.	Non-Matching	Writer's Block	250,000 Double Rubs	200 hours	See below	WS - BC
BOLERO	100% Polyurethane - PVC FREE Backing: 100% Polyester Knit	Certified	20 oz.	None	Writer's Block	250,000 Double Rubs	200 hours	See below	WS - BC
CASCADE <i>Directional</i>	100% Polyurethane - PVC FREE Backing: 100% Polyester Knit	Certified	20 oz.	Non-Matching	Writer's Block	250,000 Double Rubs	200 hours	See below	WS - BC
LONGHORN <i>Directional</i>	100% Polyurethane - PVC FREE Backing: 100% Polyester Knit	Certified	20 oz.	Non-Matching	Writer's Block	250,000 Double Rubs	200 hours	See below	WS - BC
PALERMO	100% Polyurethane - PVC FREE Backing: 100% Polyester Knit	Certified	20 oz.	None	Writer's Block	250,000 Double Rubs	200 hours	See below	WS - BC
RIFT <i>Directional</i>	100% Polyurethane - PVC FREE Backing: 100% Polyester Knit	Certified	20 oz.	Non-Matching	Writer's Block	250,000 Double Rubs	200 hours	See below	WS - BC

FLAMMABILITY

California Technical Bulletin 117-2013	Passes	BIFMA CS-191-53, Section 3	Passes
California Technical Bulletin 117, Section E	Passes	FMVSS 302	Passes
NFPA 260 (Equivalent to UFAC) Class 1	Passes	IMO A652 (16) 8.2 /	
ASTM E84 (Unadhered) Class 1 or A	Passes	IMO FTP 2010 Code MSC.307(88) Part 8, 3.1	Passes

All patterns may comply with California Technical Bulletin 133 when combined with appropriate components.

REDUCED ENVIRONMENTAL IMPACT

PVC FREE Lead Free Phthlate Free Heavy Metal Free Formaldehyde Free Low VOC BPA Free Non-Toxic
99%+ of all Water and Raw Materials used in production are reclaimed and recycled Energy and Water Efficient Production
GREENGUARD Certified products are tested for low chemical emissions to standard UL 2818. For more information, visit UL.com/gg.

SUPERIOR PERFORMANCE

Engineered specifically for the demanding Hospitality, Healthcare, Contract/Office and Education markets:
 Exceptional Abrasion Resistance Anti-Bacterial / Anti-Microbial Stain Resistant
 Knit Backing for Ease of Upholstery Mildew Resistant Bleach Cleanable
 7 year Hydrolysis (new test is to 7 weeks) (Jungle Test) rating - Test is performed by placing material in a sealed chamber at 90° C and 90% humidity.

ADDITIONAL INFORMATION

Additional colors are available. Please refer to the Mayer Fabrics website or contact customer service.
Custom Capabilities: All patterns can be custom colored. Minimum yardage applies.
Memo Samples: Please keep this card intact. Individual memo samples can be ordered on our website or by contacting customer service.
Fabric Color Matching: Mayer Fabrics always attempts to ship a satisfactory commercial match. Because of industry standard dye lot variation, colors may not match exactly.
Digital Swatch Card Color Matching: Due to color variations on different monitors and color printers, actual swatch colors may vary slightly. Please request a memo sample from Mayer Fabrics to ensure proper color representation.
Specifications: Specifications are correct at the time of printing. Additional specifications are available on our website.
For information or assistance with products or services, call us at 800.428.4415 or refer to our website, www.mayerfabrics.com.

**WRITER'S
BLOCK™**
INK RESISTANT TECHNOLOGY



MAYERFABRICS

GSA Contract #GS-28F-0022P

☎ 317.267.2626 or 800.428.4415 ☎ 317.267.2629 or 877.7SAMPLE

www.mayerfabrics.com
 ©2014 Mayer-Paetz, Inc.

WACCD  50914