



WATERLILYCOORDINATES

Pattern	Grade
Abbey	3
Botany	5
Caressa	2
Ephesus	5
Fedora	2
Fretwork	6
Gem	2
Huipil	5
Kensington	3
Labyrinth	5
Lavish	3
Marmara	4
Matka	3
Metal Strips	6
Molecule	6
Puno	5
Reflector	5
Relativity	6
Static	6
Vector	6



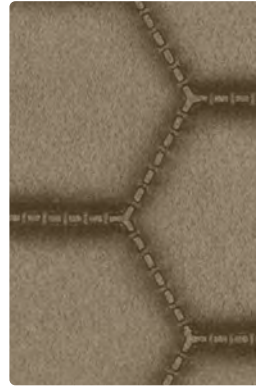
MAYERFABRICS



LAVISH
WC969-007 Ecreu



RELATIVITY
TL465-007 Greige



MOLECULE
MU-017 Stone



VECTOR
VE-007 Latte



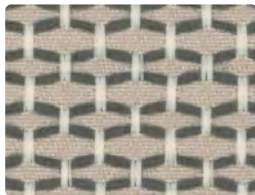
FRETWORK
WC700-007 Cafe



HUIPIL
450-006 Charcoal



LAVISH
WC969-000 Mocha



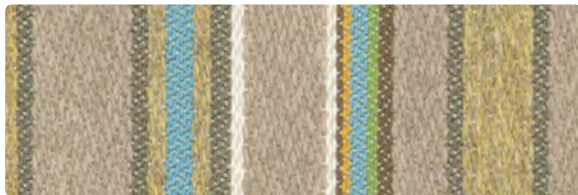
STATIC
TL466-006 Greige



REFLECTOR
433-017 Mercury



LABYRINTH
628-017 Flax



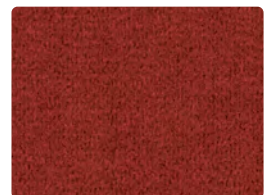
PUNO
444-002 Spring



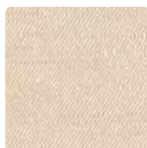
EPHESUS
623-002 Topaz



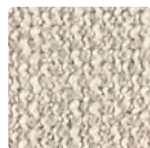
MARMARA
625-009 Spice



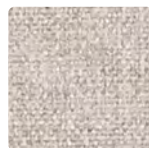
GEM
626-009 Spice



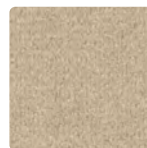
MATKA
MT-007 Champagne



ABBEY
WC706-017 Limestone



FEDORA
621-046 Light Grey



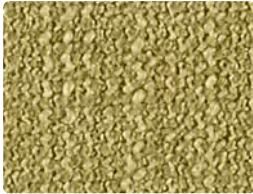
GEM
626-007 Oat



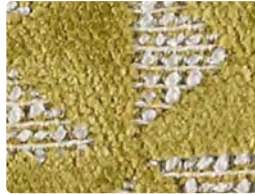
CARESSA
CA-047 Doe



MATKA
MT-022 Saffron



ABBEY
WC706-003 Spring



EPHEBUS
623-023 Citron



KENSINGTON
WC701-007 Almond



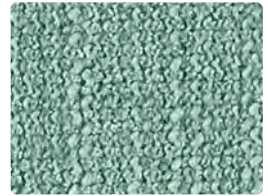
EPHEBUS
623-024 Lake



METAL STRIPS
434-002 Desert Flower



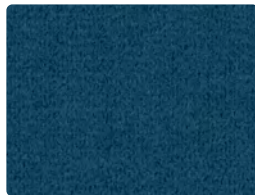
FEDORA
621-033 Opal



ABBEY
WC706-024 Sea



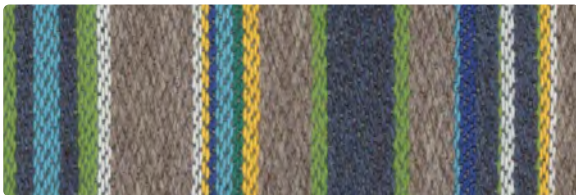
BOTANY
629-004 Lake



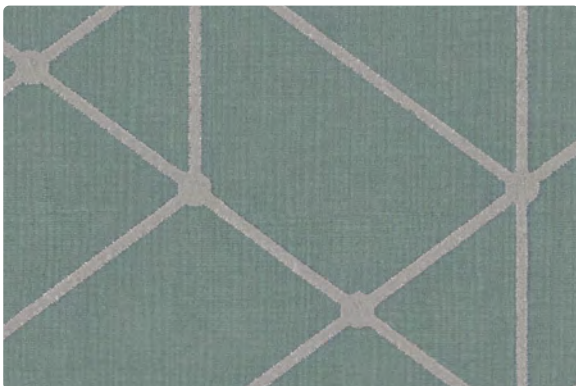
GEM
626-014 Ocean



FRETWORK
WC700-003 Sea



PUNO
444-003 Cacti



VECTOR
VE-003 Mint



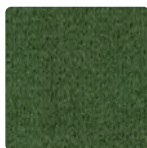
BOTANY
629-008 Hyacinth



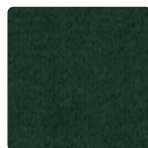
ABBEY
WC706-005 Plum



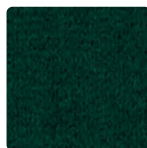
GEM
626-036 Dove



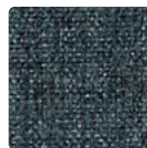
GEM
626-003 Jade



GEM
626-023 Pine



GEM
626-013 Emerald



FEDORA
621-004 Midnight



GEM
626-005 Plum

TECHNICAL INFORMATION

Waterlily Coordinates



Pattern 54"	Content and Backing	Certifications	Weight/ Linear Yd.	Pattern Repeat	Finish	Abrasion Wyzenbeek	Light- Fastness	Flammability	Cleaning Code
ABBEY Directional	100% Polyester Backing: Crypton®	GREENGUARD Gold	22.76 oz.	None	Crypton® with Antimicrobial Silver Ion Technology	100,000 Double Rubs	40 hours	Cal. 117-2013 NFPA 260/UFAC Class 1	Crypton Cleaning, Bleach Cleanable
BOTANY Directional	58% Acrylic, 34% Polyester, 6% Cotton, 2% Viscose Backing: Acrylic	GREENGUARD Gold, OEKO-TEX®	31.64 oz.	0.59" H, 0.59" V	Stain Repellent - PFOA & PFOS Free	50,000 Double Rubs	40 hours	Cal. 117-2013 NFPA 260/UFAC Class 1	W
CARESSA	80% Vinyl - Phthalate Free face, 20% Polyester backing	GREENGUARD	29 oz.	None	Soil & Stain Resistant Top Coat with Ink Resistant Technology	650,000^ Double Rubs	1000 hours	Cal. 117-2013 NFPA 260/UFAC Class 1 FMVSS 302	Bleach Cleanable, Coated Fabrics Cleaning
EPHESUS Directional	61% Polyester, 30% Acrylic, 9% Viscose Backing: Acrylic	GREENGUARD Gold, OEKO-TEX®	25.08 oz.	14.17" H, 11.81" V Random Match	Stain Repellent - PFOA Free	145,000^ Double Rubs	40 hours	Cal. 117-2013 NFPA 260/UFAC Class 1	WS
FEDORA Directional Multi-use†	100% Polyester Backing: Polyester	GREENGUARD Gold	17.2 oz.	None	Stain Repellent - PFOA Free	100,000 Double Rubs	40 hours	Cal. 117-2013 NFPA 260/UFAC Class 1 ASTM E84 (Unadhered) Class 1 or A	W
FRETWORK Directional	53% Recycled Polyester (34% Pre-/19% Post-Consumer), 47% Polyester Backing: Crypton® Green	GREENGUARD Gold, Facts Silver	15 oz.	3.125" H, 3.25" V	Crypton® Green with Antimicrobial Silver Ion Technology	75,000 Double Rubs	40 hours	Cal. 117-2013 NFPA 260/UFAC Class 1	Crypton Cleaning, Bleach Cleanable
GEM Directional	100% Polyester Backing: Polyester	GREENGUARD Gold	19.68 oz.	None	Liquid and Stain Repel - PFOA & PFOS Free	100,000 Double Rubs	40 hours	Cal. 117-2013 NFPA 260/UFAC Class 1	W
HUIPIL Directional	61% Sunbrella® Acrylic, 39% Sunbrella® Polyester Backing: Acrylic Latex	GREENGUARD Gold, Facts Silver	15.46 oz.	0.36" H 0.83" V	Liquid and Stain Repel	100,000 Double Rubs	2000 hours	Cal. 117-2013 NFPA 260/UFAC Class 1	WS, Bleach Cleanable
KENSINGTON Directional	100% Polyester Backing: Crypton®	GREENGUARD Gold	20.48 oz.	None	Crypton® with Antimicrobial Silver Ion Technology	100,000 Double Rubs	40 hours	Cal. 117-2013 NFPA 260/UFAC Class 1	Crypton Cleaning, Bleach Cleanable
LABYRINTH Directional	75% Polyester, 25% Cotton Backing: Acrylic	GREENGUARD Gold	30.69 oz	13.77" H, 13.77" V	Stain Repellent - PFOA & PFOS Free	100,000 Double Rubs	40 hours	Cal. 117-2013 NFPA 260/UFAC Class 1	S
LAVISH Directional	100% Polyester Backing: Crypton®	GREENGUARD Gold	22.98 oz.	None	Crypton® with Antimicrobial Silver Ion Technology	79,000 Double Rubs	40 hours	Cal. 117-2013 NFPA 260/UFAC Class 1	Crypton Cleaning, Bleach Cleanable
MARMARA Directional	59% Polyester, 35% Acrylic, 6% Viscose Backing: Acrylic	GREENGUARD Gold, OEKO-TEX®	20.11	14.2" H, 8.4" V Non-Matching	Stain Repellent - PFOA Free	150,000^ Double Rubs	40 hours	Cal. 117-2013 NFPA 260/UFAC Class 1	WS
MATKA Directional	80% Vinyl - Phthalate Free face, 20% Polyester backing	GREENGUARD	30	Non-Matching	Soil & Stain Resistant Top Coat with Ink Resistant Technology	250,000^ Double Rubs	500 hours	Cal. 117-2013 NFPA 260/UFAC Class 1	WS, Bleach Cleanable, Coated Fabrics Cleaning
METAL STRIPS Directional	63% Sunbrella® Solution-Dyed Acrylic, 37% Sunbrella® Solution-Dyed Polyester Backing: None	GREENGUARD Gold, Facts Silver	14.9 oz.	7.4" H 12" V	Liquid and Stain Repel	76,000 Double Rubs	2000 hours	Cal. 117-2013 NFPA 260/UFAC Class 1	WS, Bleach Cleanable
MOLECULE Directional Railroaded	24% Polyurethane Polycarbonate - PVC Free face, 76% Polyester backing	GREENGUARD	27.5 oz.	2.25" H, 1.3" V Random Match	WRITE AWAY® - Soil & Stain Resistant Top Coat with Ink Resistant Technology	100,000 Double Rubs	200 hours	Cal. 117-2013 NFPA 260/UFAC Class 1 IMO A.652(16) 8.2	WS, Bleach Cleanable, Coated Fabrics Cleaning
PUNO Directional Railroaded	98% Sunbrella® Acrylic, 2% Sunbrella® Polyester Backing: Acrylic Latex	GREENGUARD Gold, Facts Silver	16.72 oz.	7.39" H 0" V	Liquid and Stain Repel	100,000 Double Rubs	2000 hours	Cal. 117-2013 NFPA 260/UFAC Class 1	WS, Bleach Cleanable
REFLECTOR Directional	44% PVC, 42% Sunbrella® Solution- Dyed Acrylic, 14% Sunbrella® Solution-Dyed Polyester Backing: Acrylic	GREENGUARD Gold	22.36 oz.	0.19" H 0.4" V	Liquid and Stain Repel	100,000 Double Rubs	2000 hours	Cal. 117-2013 NFPA 260/UFAC Class 1	WS, Bleach Cleanable
RELATIVITY Directional	88% Polyester, 12% Graffiti-Free® Tekloom® TPE Backing: Polyester	GREENGUARD Gold	17 oz.	Non-Matching	WRITE AWAY® - Soil & Stain Resistant Top Coat with Ink Resistant Technology	1,000,000^ Double Rubs	40 hours	Cal. 117-2013 NFPA 260/UFAC Class 1 IMO A.652(16) 8.2	WS, Bleach Cleanable, Coated Fabrics Cleaning
STATIC Directional	88% Polyester, 12% Graffiti-Free® Tekloom® TPE Backing: Polyester	GREENGUARD Gold	17 oz.	0.5" H, 0.5" V	WRITE AWAY® - Soil & Stain Resistant Top Coat with Ink Resistant Technology	1,000,000^ Double Rubs	40 hours	Cal. 117-2013 NFPA 260/UFAC Class 1 IMO A.652(16) 8.2	WS, Bleach Cleanable, Coated Fabrics Cleaning
VECTOR Directional	40% Polyurethane Polycarbonate - PVC Free face, 60% Polyester backing	GREENGUARD	16 oz.	20.25" H, 10.25" V	WRITE AWAY® - Soil & Stain Resistant Top Coat with Ink Resistant Technology	100,000 Double Rubs	200 hours	Cal. 117-2013 NFPA 260/UFAC Class 1 IMO A.652(16) 8.2	WS, Bleach Cleanable, Coated Fabrics Cleaning

DYE TRANSFER DISCLAIMER

Certain clothing and accessory dyes (such as those used on denim jeans) may migrate to lighter colors. This phenomenon is increased by humidity and temperature and is irreversible. Mayer Fabrics will not assume responsibility for dye transfer caused by external contaminants. Please check compatibility when using this product in combination with painted or varnished surfaces.

ADDITIONAL INFORMATION

^Abrasion: Multiple factors affect fabric durability and appearance retention, including end-user application and proper maintenance. Wyzenbeek results above 100,000 double rubs have not been shown to be a reliable indicator of increased fabric lifespan.

†Multi-Use: Multi-use fabrics that can be used for upholstery, panels, wrapped walls, and acoustic.

All patterns can be custom colored. Minimum yardage applies.

Digital Swatch Card Color Matching: Due to color variations on different monitors and color printers, actual swatch colors may vary slightly. Please request a memo sample from Mayer Fabrics to ensure proper color representation.

Complete and current product information available at mayerfabrics.com.

©2020

Remedy
by kovet

MAYER FABRICS

Sales@KovetHospitality.com
kovethospitality.com 619.554.8800

T 800.428.4415 mayerfabrics.com
500 S. Kitley Ave. Indianapolis, IN 46219

DKMWCCD
MF1020