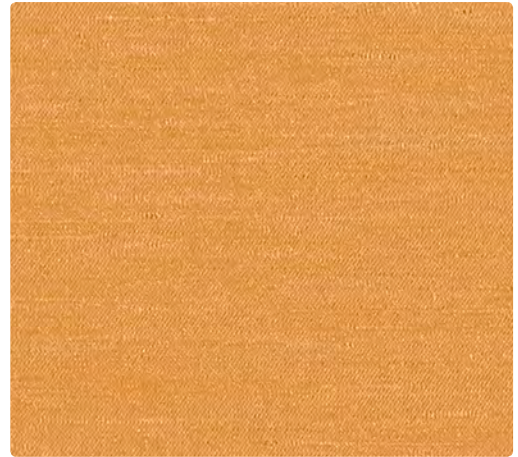
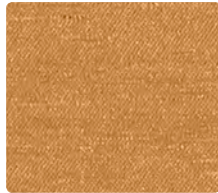




MT-002
Chamois



MT-012
Amber



MT-022
Saffron



MT-013
Spring



MT-019
Sepia



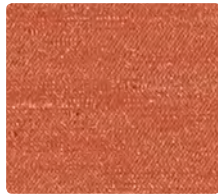
MT-003
Clover



MT-037
Buff



MT-047
Veil



MT-009
Harvest



MT-024
Seafoam



MT-007
Champagne



MT-017
Mist

Application
Upholstery Seating

Content
80% Vinyl face
20% Polyester backing

Width
54 inches

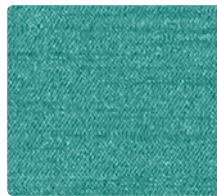
Abrasion (Wyzenbeek/Cotton Duck)
Exceeds 250,000 Double Rubs

Finish
Soil and stain resistant top coat
with ink resistant technology

Reduced Environmental Impact
GREENGUARD Certified



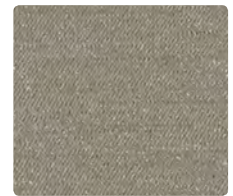
MT-011
Wine



MT-023
Peacock



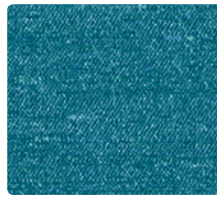
MT-010
Mocha



MT-036
Titanium



MT-001
Cherry



MT-014
Cerulean



MT-020
Burnish



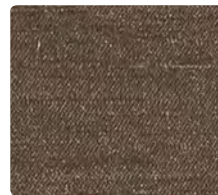
MT-016
Shadow



MT-005
Aubergine



MT-004
Lapis



MT-000
Shiitake



MT-006
Midnight

TECHNICAL INFORMATION

Content: 80% Vinyl face, 20% Polyester backing – Phthalate (21P) Free	Weight: 30 oz./linear yard
Width: 54"	Finish: Soil and stain resistant top coat with ink resistant technology
Approx. Repeat: Non-Matching	Directional: Yes Railroaded: No

PERFORMANCE

Surface Abrasion: Heavy Duty ASTM D 4157 (Wyzenbeek/Cotton Duck)	Results Exceeds 250,000 Double Rubs Multiple factors affect fabric durability and appearance retention, including end-user application and proper maintenance. Wyzenbeek results above 100,000 double rubs have not been shown to be a reliable indicator of increased fabric lifespan.
Colorfastness to Crocking AATCC 8	Dry: Class 4 min / Wet: Class 4 min
Colorfastness to Light AATCC 16-2004, Opt 3	Class 4 at 500 hours

FLAMMABILITY

California Technical Bulletin 117-2013
 NFPA 260/UFAC Class 1
 ASTM E84 (Unadhered) Class 1 or A
 FMVSS 302
 IMO FTP 2010 Code MSC.307(88) Part 8, 3.1 & 3.2
 May comply with California Technical Bulletin 133 when combined with appropriate components.

REDUCED ENVIRONMENTAL IMPACT

This product is **GREENGUARD Certified for low chemical and particle emissions to UL standard UL 2818 and may contribute to LEED certification.** For complete information visit mayerfabrics.com and UL.com/gg.

21P Phthalate Free (includes all Phthalates listed in CAL Prop 65 & CPSIA)
Lead Free
BPA Free/TRIS Free/Formaldehyde Free
Does not contain Conflict Minerals

CLEANING INFORMATION

WS: Water/Solvent Cleaner
 BC: Bleach Cleanable – 1 part bleach, 9 parts water = 10% bleach, 90% water solution. Do not clean/disinfect fabric for longer than 10 minutes using the 10% bleach solution. Always rinse promptly with clean water after applying the bleach solution. Failure to do so will void any and all warranties.

For additional care and cleaning information, please refer to the Mayer Fabrics website.

ADDITIONAL INFORMATION

Custom Capabilities: All patterns can be custom colored. Minimum yardage applies.
Digital Swatch Card Color Matching: Due to color variations on different monitors and color printers, actual swatch colors may vary slightly. Please request a memo sample from Mayer Fabrics to ensure proper color representation.
Specifications: Specifications are correct at the time of printing. Current specifications are available on our website.



This fabric meets or exceeds these ACT performance guidelines.
 Certification Marks owned by ACT

