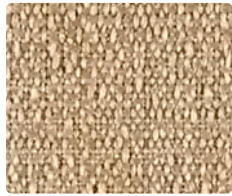




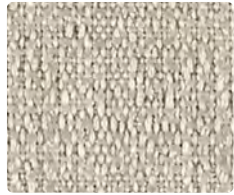
Igloo
422-037



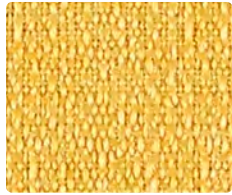
Cafe Au Lait
422-007



Almond
422-017



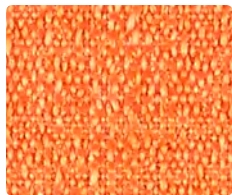
Stone
422-027



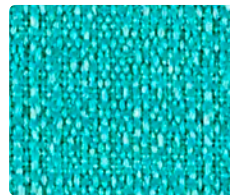
Saffron
422-002



Dove
422-026



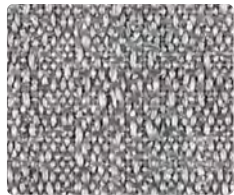
Mandarin
422-009



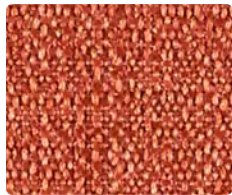
Turquoise
422-034



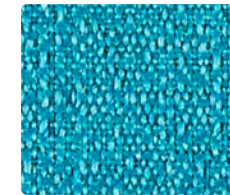
Citrine
422-023



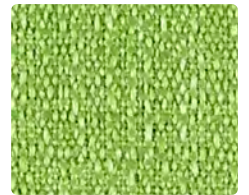
Iron
422-036



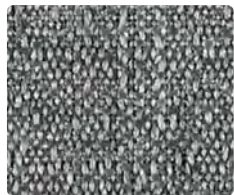
Brick
422-019



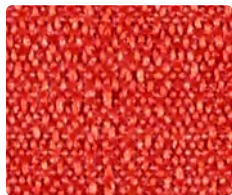
Ocean
422-044



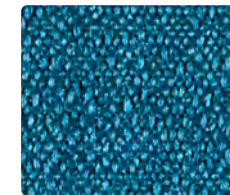
Spring
422-003



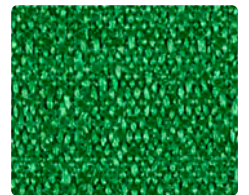
Charcoal
422-016



Lipstick
422-001



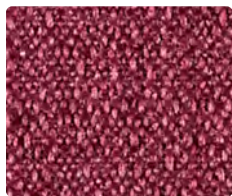
Caribbean
422-024



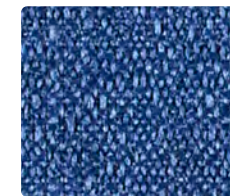
Emerald
422-013



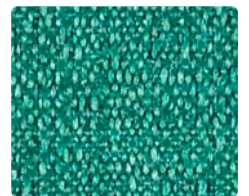
Onyx
422-006



Beet
422-008



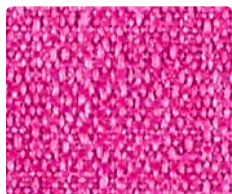
Indigo
422-004



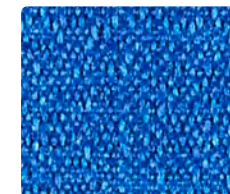
Pine
422-033



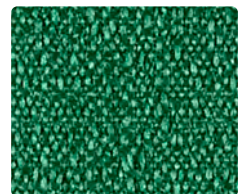
Espresso
422-000



Magenta
422-005



Electric
422-014



Bottle
422-043

Application
Multi-use for upholstery, panels,
wrapped walls, and acoustic

Content
100% Recycled Polyester

Width
54 inches

Abrasion (Wyzenbeek/Cotton Duck)
Passes 130,000 Double Rubs

Finish
Stain Repellent -
PFOA & PFOS Free

Reduced Environmental Impact
GREENGUARD Gold Certified

Eco-System®
Sustainable. Attainable at Mayer Fabrics.

CONTINUUM10

Multi-use for upholstery, panels, wrapped walls, and acoustic

TECHNICAL INFORMATION

Content: **100% Post-Consumer Recycled Polyester**

Width: 54"

Backing: Latex

Approx. Repeat: 0.50" H, 0.59" V

Weight: 15 oz./linear yard

Finish: Stain Repellent - PFOA & PFOS Free

Directional: Yes

Railroaded: No

PERFORMANCE

Surface Abrasion: Heavy Duty ASTM D 4157
(Wyzenbeek/Cotton Duck)

Pilling Resistance ASTM D 3511

Colorfastness to Crocking AATCC 8

Colorfastness to Light AATCC 16E

Results

Passes 130,000 Double Rubs Multiple factors affect fabric durability and appearance retention, including end-user application and proper maintenance. Wyzenbeek results above 100,000 double rubs have not been shown to be a reliable indicator of increased fabric lifespan.

Class 4

Dry: Grade 4 / Wet: Grade 4

Grade 4 at 40 hours

FLAMMABILITY

California Technical Bulletin 117-2013

NFPA 260/UFAC Class 1

ASTM E84 (Unadhered) Class 1 or A

REDUCED ENVIRONMENTAL IMPACT

This product is **GREENGUARD Gold Certified for low chemical and particle emissions to UL standard UL 2818 and may contribute to LEED certification.** For complete information visit mayerfabrics.com and UL.com/gg.

No FR/Antimicrobial/Antibacterial additives.



Eco-System[®]
Sustainable. Attainable at Mayer Fabrics.

The Eco-System icon indicates 100% recycled content.

TEN YEAR WARRANTY

CONTINUUM10 is covered by a 10-year limited performance warranty from the date of installation, when used for seating applications. CONTINUUM10 is warranted against wear through (i.e. the complete deterioration of the fabric's structure in a particular area) if properly installed and maintained. This warranty does not cover damage due to abuse, misuse, vandalism, inadequate padding or abrasion from other seating components or furniture, use of improper cleaning agents or methods and use subsequent to ownership by the original purchaser. Mayer Fabrics can provide a copy of the warranty.

If CONTINUUM10 fails to perform during the 10-year warranty period, the affected area of fabric will be repaired or replaced including labor and materials upon written request of the customer.

Except as expressly provided herein, Mayer Fabrics makes no representations or warranties, express or implied, including, without limitation, any warranty of merchantability or fitness of its products for any particular purpose, and hereby disclaim the same.

CLEANING INFORMATION

WS: Water/Solvent Cleaner

DYE TRANSFER DISCLAIMER

Certain clothing and accessory dyes (such as those used on denim jeans) may migrate to lighter colors. This phenomenon is increased by humidity and temperature and is irreversible. Mayer Fabrics will not assume responsibility for dye transfer caused by external contaminants. Please check compatibility when using this product in combination with painted or varnished surfaces.

ADDITIONAL INFORMATION

Custom Capabilities: All patterns can be custom colored. Minimum yardage applies.

Specifications: Specifications are correct at the time of printing. Current specifications are available on our website.

Digital Swatch Card Color Matching: Due to color variations on different monitors and color printers, actual swatch colors may vary slightly. Please request a memo sample from Mayer Fabrics to ensure proper color representation.



This fabric meets or exceeds these ACT performance guidelines.
*Certification Marks owned by ACT[®]



Water and Stain Repellent Finish



This 100% polyester fabric is included in the Underwriter's Laboratory Fabric Recognition Program. Additional testing of this U.L. recognized component is not required on approved panels from participating manufacturers.



MAYERFABRICS

