



WC751-002
Sunflower



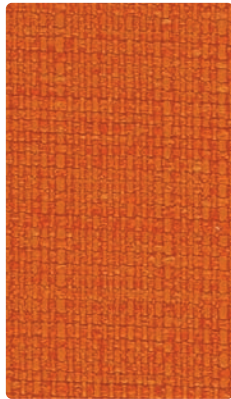
WC751-013
Limelight



WC751-007
Parchment



WC751-027
Alabaster



WC751-009
Orange Peel



WC751-003
Basil



WC751-017
Toast



WC751-026
Limestone



WC751-001
Cardinal



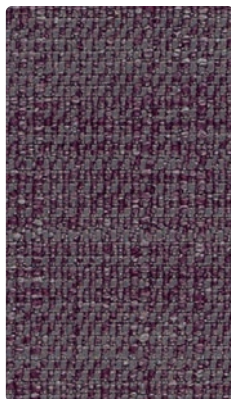
WC751-014
Calypso



WC751-010
Bark



WC751-016
Greige



WC751-005
Purple Haze



WC751-004
Indigo



WC751-000
Sable



WC751-006
Ebony



Application
Upholstery Seating

Content
60% Recycled Polyester,
40% Polyester

Width
54 inches

Abrasion (Wyzenbeek/Cotton Duck)
Passes 305,000 Double Rubs

Finish
Crypton Green® with Antimicrobial
Silver Ion Technology

Reduced Environmental Impact
GREENGUARD Gold Certified

TECHNICAL INFORMATIONContent: **60% Post-Consumer Recycled Polyester**, 40% Polyester

Width: 54"

Backing: **Crypton Green®**

Approx. Repeat: Non-Matching

Weight: 30.67 oz./linear yard

Finish: **Crypton Green®** with Antimicrobial Silver Ion Technology

Directional: Yes

Railroaded: No

PERFORMANCESurface Abrasion: Heavy Duty ASTM D 4157
(Wyzenbeek/Cotton Duck)

Pilling Resistance ASTM D 3511

Colorfastness to Crocking AATCC-8

Colorfastness to Light AATCC 16

Results

Passes 305,000 Double Rubs Multiple factors affect fabric durability and appearance retention, including end-user application and proper maintenance. Wyzenbeek results above 100,000 double rubs have not been shown to be a reliable indicator of increased fabric lifespan.

Class 5

Dry: Class 4 / Wet: Class 4

Class 4 at 40 hours

FLAMMABILITY

California Technical Bulletin 117-2013

NFPA 260/UFAC Class 1

May comply with California Technical Bulletin 133 when combined with appropriate components.

REDUCED ENVIRONMENTAL IMPACT**This product is GREENGUARD Gold Certified for low chemical and particle emissions to UL standard UL 2818 and may contribute to LEED certification. For complete information visit mayerfabrics.com and UL.com/gg.****CLEANING INFORMATION**

C: Crypton Cleaning

BC: Bleach Cleanable – 1 part bleach, 9 parts water = 10% bleach, 90% water solution. Do not clean/disinfect fabric for longer than 10 minutes using the 10% bleach solution. Always rinse promptly with clean water after applying the bleach solution. Failure to do so will void any and all warranties.

ADDITIONAL INFORMATION**Custom Capabilities:** All patterns can be custom colored. Minimum yardage applies.**Specifications:** Specifications are correct at the time of printing. Current specifications are available on our website.**Digital Swatch Card Color Matching:** Due to color variations on different monitors and color printers, actual swatch colors may vary slightly. Please request a memo sample from Mayer Fabrics to ensure proper color representation.This fabric meets or exceeds these ACT performance guidelines.
Certification Marks owned by ACT