

PASTIME

Featuring Silver Ion Technology

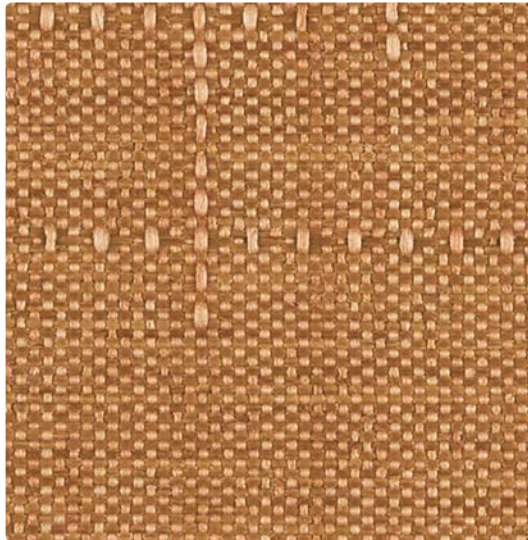
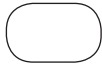
Woven Crypton®



MAYERFABRICS

Woven Crypton®

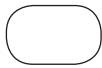
with Antimicrobial Silver Ion Technology



WC959-009 Apricot



WC959-003 Celadon



Application
Upholstery Seating

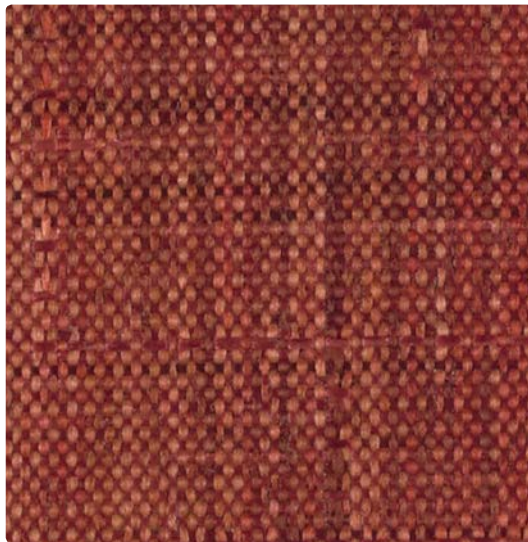
Content
100% Polyester

Width
54 inches

Abrasion (Wyzenbeek/Cotton Duck)
Exceeds 70,000 Double Rubs

Finish
Crypton® with Antimicrobial
Silver Ion Technology

Reduced Environmental Impact
GREENGUARD Gold Certified



WC959-001 Persimmon



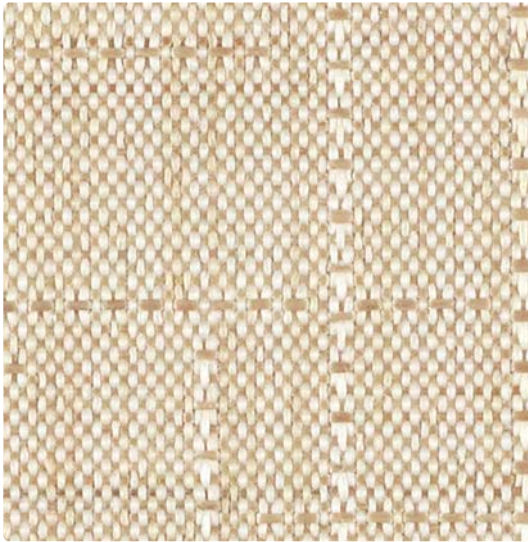
WC959-008 Currant



WC959-002 Honey



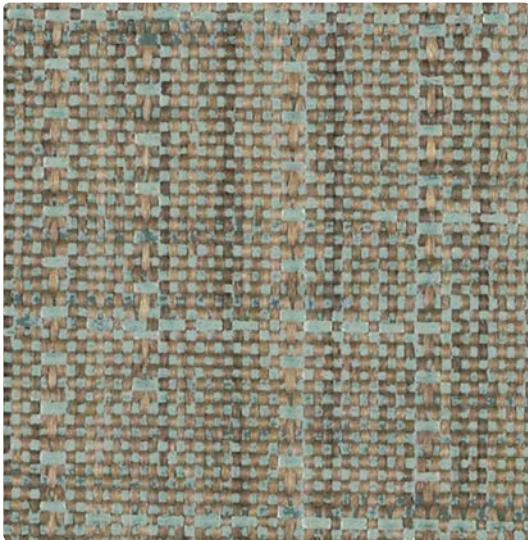
WC959-000 Godiva



WC959-007 **Linen**



WC959-017 **Raffia**



WC959-014 **Vapor**



WC959-004 **Marina**









WC959-010 **Mushroom**



WC959-006 **Graphite**

TECHNICAL INFORMATION

Content: 100% Polyester Width: 54" Weight: 20.11 oz./linear yard	Backing: Crypton® Finish: Crypton® with Antimicrobial Silver Ion Technology Cleaning Code: C, BC	Approx. Repeat: 10" H, Random Match V Directional: Yes Shown Railroaded: No
--	--	---

PERFORMANCE (*Certifications Marks Owned by ACT.)	Test Method	Results
Surface Abrasion: Heavy Duty 	ASTM-D-3597/4157 (Cotton Duck)	Exceeds 70,000 Double Rubs
Breaking Strength: 	ASTM-D-5034 (Grab Test)	Warp 427.6 lbs / Fill 386.2 lbs
Seam Slippage: 	ASTM-D-4034	Warp 54.6 lbs / Fill 42.1 lbs
Pilling Resistance: 	ASTM-D-3511	Class 3.5
Colorfastness to Crocking: 	AATCC-8	Dry: Class 4 / Wet: Class 3
Colorfastness to Light: 	AATCC-16E	Class 4 at 40 hours

Class in the colorfastness requirements is based on a numerical scale of 5 for negligible or no color transfer to 1 for very severe color change or color transfer.

FLAMMABILITY 

California Technical Bulletin 117-2013	Passes
NFPA 260/UFAC Class 1	Passes
May comply with California Technical Bulletin 133 when combined with appropriate components.	

REDUCED ENVIRONMENTAL IMPACT

This product is GREENGUARD Gold Certified for low chemical and particle emissions to UL standard UL 2818 and may contribute to LEED certification. For complete information visit mayerfabrics.com and UL.com/gg.

All Crypton products are environmentally preferable. Crypton is produced in a world-class manufacturing operation. Crypton is committed to green and has incorporated Crypton's optimized green formulation in all Crypton upholstery, meaning a greener Crypton.

STAIN RESISTANCE

Stain Resistance is based on a numerical scale with 5 being the highest for stain removal.

	After 5 min./After 24 hrs.		After 5 min./After 24 hrs.
Blood	Class 4-5/Class 4-5	Urine	Class 4-5/Class 4-5
Iodine	Class 4-5/Class 4-5	Suntan Lotion	Class 4-5/Class 4-5
Ketchup	Class 4-5/Class 4-5	Black Coffee	Class 4-5/Class 4-5
Milk	Class 4-5/Class 4-5	Cola	Class 4-5/Class 4-5

BACTERIAL AND FUNGUS/MILDEW RESISTANCE

Non leaching Silver Ion Technology microbial protection. Excellent anti-bacterial and anti-fungal properties as evidenced by the following methods: 4 and 5 millimeter-wide growth-free zones produced against the staphylococcus aureus test organism. Crypton resists fungal growth, test AATCC 30-2004, Aspergillus niger (ATCC #6275). Crypton resists bacterial growth, test ISO 20743:2007(E), Klebsiella pneumoniae (ATCC #4352) EPA Approved – When Crypton's Disinfectant and Deodorizer is used on Crypton Super Fabric, you have a disinfected fabric system. Crypton is the first and only fabric approved by the EPA proven to be disinfected. Crypton's Disinfectant and Deodorizer will kill MRSA, VRSA, IV, E. Coli, hepatitis and many more bacteria and viruses.

CARE AND CLEANING INFORMATION

C: Crypton® Cleaning – Crypton fabrics are available in various fiber types, and all Crypton fabrics can be cleaned with soap and water. For the best cleaning solution, use CRYPTON UPHOLSTERY CLEANER, available from Mayer Fabrics.
 BC: Bleach Cleanable – 1 part bleach, 9 parts water = 10% bleach, 90% water solution. Do not clean/disinfect fabric for longer than 10 minutes using the 10% bleach solution. Always rinse promptly with clean water after applying the bleach solution. Failure to do so will void any and all warranties.

ADDITIONAL INFORMATION

Custom Capabilities: All patterns can be custom colored. Minimum yardage applies.
Memo Samples: Please keep this card intact. Individual memo samples can be ordered on our website or by contacting customer service.
Color Matching: Mayer Fabrics always attempts to ship a satisfactory commercial match. Because of industry standard dye lot variation, colors may not match exactly.
Digital Swatch Card Color Matching: Due to color variations on different monitors and color printers, actual swatch colors may vary slightly. Please request a memo sample from Mayer Fabrics to ensure proper color representation.
Specifications: Specifications are correct at the time of printing. Current specifications are available on our website.
 For information or assistance with products or services, call us at 800.428.4415 or refer to our website, www.mayerfabrics.com.

