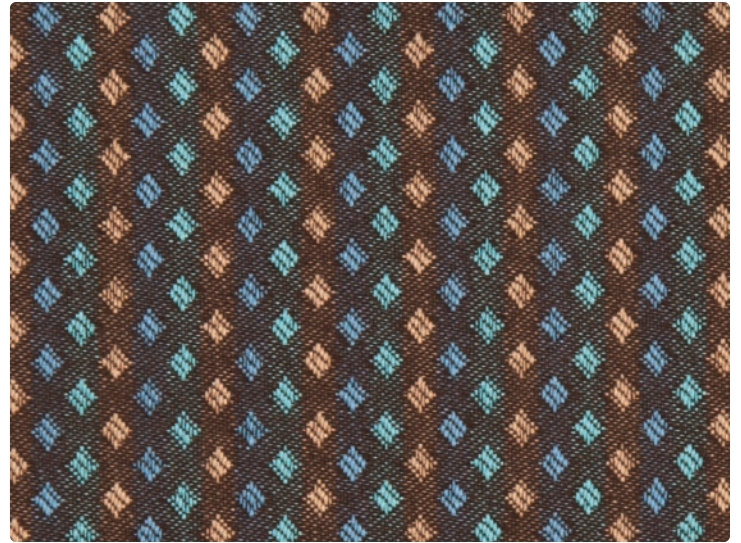




WC951-002 Gilt



WC951-000 Zenith



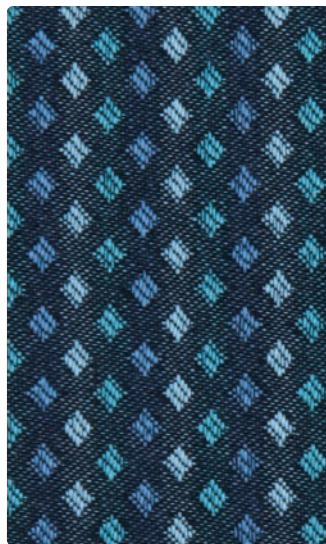
WC951-003 Grassland



WC951-001 Tango



WC951-007 Quartz



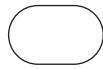
WC951-004 Nautica



WC951-008 Jewel



WC951-006 Pewter



**Application**  
Seating

**Content**  
100% Polyester

**Width**  
54 inches

**Abrasion**  
Passes 80,000 Double Rubs

**Finish**  
Crypton® with Antimicrobial Silver Ion Technology

**Reduced Environmental Impact**  
GREENGUARD Gold Certified



**TECHNICAL INFORMATION**

Content: 100% Polyester  
Width: 54"  
Weight: 12.19 oz./linear yard

Backing: Crypton®  
Finish: Crypton® with Antimicrobial  
Finish: Silver Ion Technology  
Cleaning Code: C

Visual Repeat: 1" H, .375" V  
Directional: Yes  
Shown Railroaded: Yes

**PERFORMANCE** (\*ACT\* Registered Certification Marks)

Test Method	Results
Surface Abrasion: Heavy Duty <b>A</b> *	ASTM-D-3597/4157 (Cotton Duck) Passes 80,000 Double Rubs
Breaking Strength: ✂*	ASTM-D-5034 (Grab Test)(Grab Test) Warp 467.53 lbs/Fill 377.3 lbs
Seam Slippage: ✂*	ASTM-D-4034 Warp 51.7 lbs/Fill 39.5 lbs
Pilling Resistance: ✂*	ASTM-D-3511 Class 4
Colorfastness to Crocking: ☞*	AATCC-8 Dry: Class 4/Wet: Class 3
Colorfastness to Light: ☀*	AATCC-16 Class 4 at 40 hours

Class in the colorfastness requirements is based on a numerical scale of 5 for negligible or no color transfer to 1 for very severe color change or color transfer.

**FLAMMABILITY** 

California Technical Bulletin 117, Section E  
NFPA 260 (Equivalent to UFAC) Class 1  
May comply with California Technical Bulletin 133 when combined with appropriate components.

Passes  
Passes

**REDUCED ENVIRONMENTAL IMPACT**

All Crypton products are environmentally preferable. Crypton is produced in a world-class manufacturing operation. Crypton is committed to green and has incorporated Crypton's optimized green formulation in all Crypton upholstery, meaning a greener Crypton.

**GREENGUARD** Gold Certified products are tested for low chemical emissions to standard UL 2818. For more information, visit [UL.com/gg](http://UL.com/gg).

**STAIN RESISTANCE**

Stain Resistance is based on a numerical scale with 5 being the highest for stain removal.

	After 5 min./After 24 hrs.		After 5 min./After 24 hrs.
Blood	Class 4-5/Class 4-5	Urine	Class 4-5/Class 4-5
Iodine	Class 4-5/Class 4-5	Suntan Lotion	Class 4-5/Class 4-5
Ketchup	Class 4-5/Class 4-5	Black Coffee	Class 4-5/Class 4-5
Milk	Class 4-5/Class 4-5	Cola	Class 4-5/Class 4-5

**BACTERIAL AND FUNGUS/MILDEW RESISTANCE**

Non leaching Silver Ion Technology microbial protection.

Excellent anti-bacterial and anti-fungal properties as evidenced by the following methods: 4 and 5 millimeter-wide growth-free zones produced against the staphylococcus aureus test organism.

Crypton resists fungal growth, test AATCC 30-2004, Aspergillus niger (ATCC #6275).

Crypton resists bacterial growth, test ISO 20743:2007(E), Klebsiella pneumoniae (ATCC #4352)

EPA Approved – When Crypton's Disinfectant and Deodorizer is used on Crypton Super Fabric, you have a disinfected fabric system. Crypton is the first and only fabric approved by the EPA proven to be disinfected. Crypton's Disinfectant and Deodorizer will kill MRSA, VRSA, IV, E. Coli, hepatitis and many more bacteria and viruses.

**CARE AND CLEANING INFORMATION**

C: Crypton® Cleaning – Crypton fabrics are available in various fiber types, and all Crypton fabrics can be cleaned with soap and water. The ability to use bleach as a cleaner without damaging the fabric is fiber- and dye-dependent. Cryptons with solution-dyed (acrylic, nylon, olefin) fibers and all polyester Crypton selections can be cleaned safely with bleach; a 10% bleach and 90% water solution is recommended and thorough rinsing is required. For the best cleaning solution, use **CRYPTON UPHOLSTERY CLEANER**, available from Mayer Fabrics.

**BC: Bleach Cleanable** – 1 part bleach, 9 parts water = 10% bleach, 90% water solution. Always rinse promptly with clean water after applying the bleach solution.

**ADDITIONAL INFORMATION**

**Custom Capabilities:** All patterns can be custom colored. Minimum yardage applies.

**Memo Samples:** Please keep this card intact. Individual memo samples can be ordered on our website or by contacting customer service.

**Fabric Color Matching:** Mayer Fabrics always attempts to ship a satisfactory commercial match. Because of industry standard dye lot variation, colors may not match exactly.

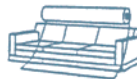
**Digital Swatch Card Color Matching:** Due to color variations on different monitors and color printers, actual swatch colors may vary slightly. Please request a memo sample from Mayer Fabrics to ensure proper color representation.

**Specifications:** Specifications are correct at the time of printing. Current specifications are available on our website.

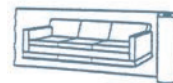
**For information or assistance with products or services, call us at 800.428.4415 or refer to our website, [www.mayerfabrics.com](http://www.mayerfabrics.com).**



Railroaded: This feature allows reduction of seams and enables smoother furniture tailoring.



Fabric "up the roll"  
or "regular" position



Fabric "railroaded" or  
"top selvage" position

We recommend this pattern should be upholstered as shown on card.

**MAYER**FABRICS

GSA Contract # **GS-28F-0022P**