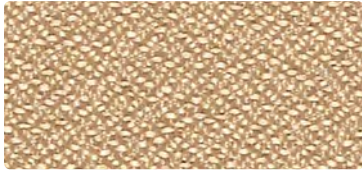


STANDARDS

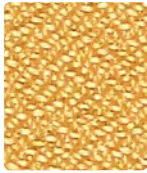


MAYERFABRICS

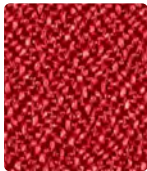
FORTE



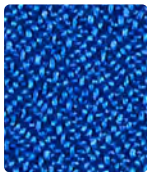
298-027
Oatmeal



298-012
Sunray



298-001
Rouge



298-014
Blue Ray



298-033
Fairway



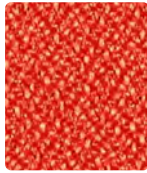
298-053
Grass



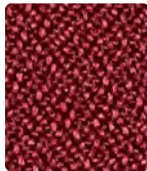
298-017
Pumice



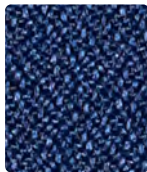
298-036
Char



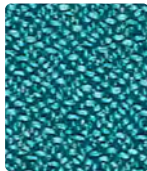
298-009
Pimento



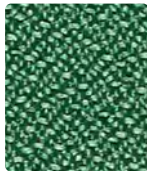
298-011
Port



298-004
Cadet



298-044
Peacock



298-043
Hedge

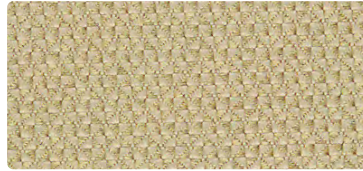


298-000
Fudge



298-006
Tuxedo

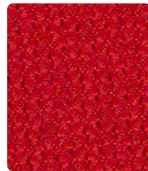
QUATTRO



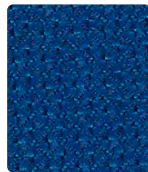
300-007
Chalk



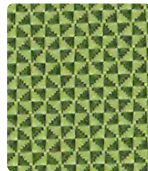
300-002
Wheat



300-011
Hibiscus



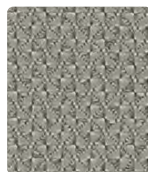
300-014
Skyway



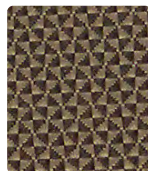
300-003
Spring Green



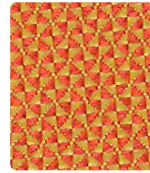
300-033
Leaf



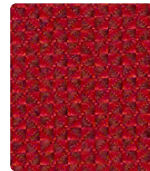
300-026
Mercury



300-016
Khaki



300-019
Golden Orange



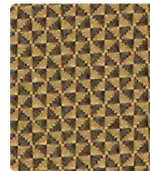
300-001
Deep Crimson



300-004
Midnight Blue



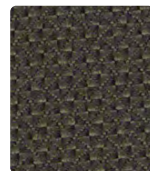
300-023
Mallard



300-000
Honeycomb



300-036
Pumice



300-006
Granite

CROSS CHECK



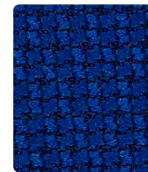
299-037
Biscuit



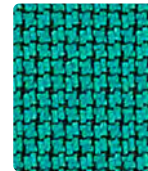
299-002
Sunshine



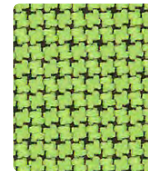
299-021
Red Baron



299-024
Blue Ribbon



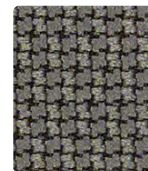
299-053
Peacock



299-003
Lime



299-027
Stone



299-026
Platinum



299-009
Paradise



299-011
Vermillion



299-014
Imperial



299-054
Marine



299-043
Bottle



299-000
Otter



299-006
Slate Black

Additional colors are available. Please refer to the Mayer Fabrics website.

FEDORA



621-017
Fawn



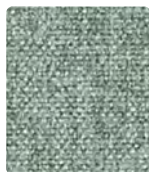
621-002
Topaz



621-011
Tomato



621-014
Indigo



621-033
Opal



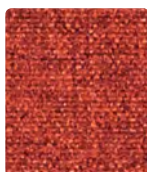
621-023
Eucalyptus



621-046
Light Grey



621-036
Dapper



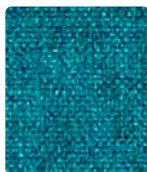
621-009
Persimmon



621-008
Plum



621-004
Midnight



621-053
Aegean



621-003
Cactus



621-000
Mink

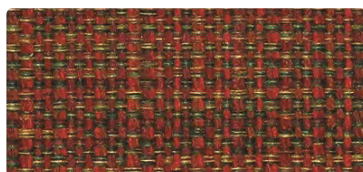


621-006
Bitumen

JUBILEE



266-007
Sand Dune



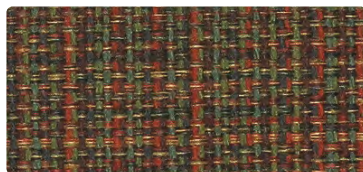
266-001
Sangria



266-029
Autumn



266-014
Harbor



266-024
Peacock



266-003
Garland

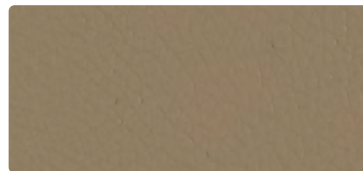


266-000
Harvest



266-016
Granite

RANCHERO



RC-020
Driftwood



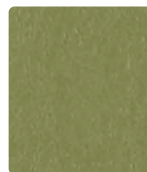
RC-007
Ecrú



RC-001
Lipstick



RC-004
Sapphire



RC-003
Basil



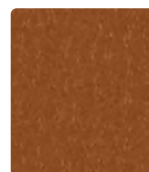
RC-036
Nickel



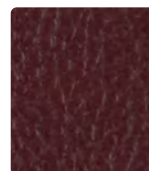
RC-026
Slate



RC-016
Thunder



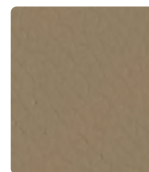
RC-009
Sepia



RC-008
Brandy



RC-014
Navy



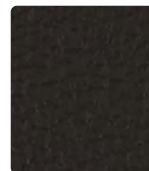
RC-010
Greige



RC-020
Driftwood



RC-000
Chocolate



RC-006
Black

Additional colors are available. Please refer to the Mayer Fabrics website.

TECHNICAL INFORMATION

Standards

Pattern 54"	Content and Backing	Certifications	Weight/ Linear Yd.	Pattern Repeat	Finish	Abrasion Wyzenbeek	Light- Fastness	Flammability	Cleaning Code
CROSS CHECK	100% Polyester Backing: Acrylic	GREENGUARD Gold	10.71 oz.	Non- Matching	Stain Repellent	258,000 [^] Double Rubs	40 hours	Cal. 117-2013 NFPA 260/UFAC Class 1 ASTM E84 (Adhered) Class 2 or B	S
FEDORA <i>Directional Multi-use⁺</i>	100% Polyester Backing: Polyester Knit	GREENGUARD Gold	17.2 oz.	None	Stain Repellent— PFOA Free	100,000 [^] Double Rubs	40 hours	Cal. 117-2013 NFPA 260/UFAC Class 1 ASTM E84 (Unadhered) Class 1 or A	W
FORTE	100% Polyester Backing: Acrylic	GREENGUARD Gold	12.10 oz.	None	Stain Repellent	183,000 [^] Double Rubs	40 hours	Cal. 117-2013 NFPA 260/UFAC Class 1 ASTM E84 (Adhered) Class 2 or B	WS
JUBILEE <i>Directional Railroaded</i>	57% Cotton, 43% Polyester Backing: Acrylic	GREENGUARD Gold	16.704 oz.	11.438" H, 0" V Random Match	Stain Repellent	100,000 [^] Double Rubs	40 hours	Cal. 117-2013 NFPA 260/UFAC Class 1	S
QUATTRO <i>Directional</i>	100% Polyester Backing: Acrylic	GREENGUARD Gold	13.06 oz.	Non- Matching	Stain Repellent	237,000 [^] Double Rubs	40 hours	Cal. 117-2013 NFPA 260/UFAC Class 1 ASTM E84 (Unadhered) Class 1 or A IMO A.652(16) 8.2	S
RANCHERO	85% Vinyl face, 15% Polyester backing	GREENGUARD	24.5 oz.	None	None	250,000 [^] Double Rubs	200 hours	Cal. 117-2013 NFPA 260/UFAC Class 1 FMVSS 302	W

REDUCED ENVIRONMENTAL IMPACT

These products are **GREENGUARD Certified** or **GREENGUARD Gold Certified** for low chemical and particle emissions to UL standard **UL 2818** and may contribute to **LEED** certification. For complete information visit mayerfabrics.com.

CARE AND CLEANING INFORMATION

For additional care and cleaning information by pattern, please refer to the **Mayer Fabrics website**.

ADDITIONAL INFORMATION

[^]**Abrasion:** Abrasion test results exceeding ACT Performance Guidelines are not an indicator of product lifespan. Multiple factors affect fabric durability and appearance retention.

⁺**Multi-Use:** Multi-use fabrics that can be used for upholstery, panels, wrapped walls, and acoustic.

Custom Capabilities: All patterns can be custom colored. Minimum yardage applies.


Digital Swatch Card Color Matching: Due to color variations on different monitors and color printers, actual swatch colors may vary slightly. Please request a memo sample from Mayer Fabrics to ensure proper color representation.

Specifications: Specifications are correct at the time of printing. Additional specifications are available on our website.



These fabrics meet or exceed these ACT performance guidelines.
*Certification Marks owned by ACT®

Cross Check, Forte, Quattro

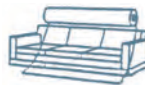
 This 100% polyester fabric is included in the Underwriter's Laboratory Fabric Recognition Program. Additional testing of this U.L. recognized component is not required on approved panels from participating manufacturers.

Cross Check, Fedora, Forte, Jubilee, Quattro

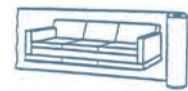


Water and Stain
Repellent Finish

Railroaded: This feature allows reduction of seams and enables smoother furniture tailoring.



Fabric "up the roll"
or "regular" position



Fabric "railroaded" or
"top selvage" position

We recommend all railroaded patterns should be upholstered as shown on card.



MAYERFABRICS

† 317.267.2626 or 800.428.4415 ‡ 317.267.2629 or 877.7SAMPLE

www.mayerfabrics.com

©2017 Mayer-Paetz, Inc.

STANCD  51017