

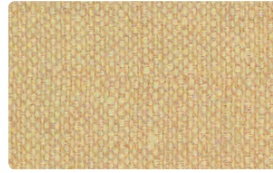
HEKMAN CONTRACT VINYL COORDINATES



CARESSA
CA-027 Buff



DURANGO
DU-007 Natural



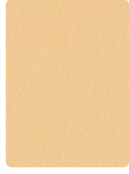
KEY LARGO
KL-017 Khaki



FLORENTINO
FT-022 Caramel



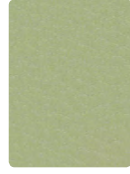
FLORENTINO
FT-007 Cream



DURANGO
DU-002 Chamois



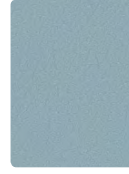
CARESSA
CA-029 Ochre



FLORENTINO
FT-033 Willow



CARESSA
CA-074 Spa



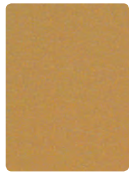
DURANGO
DU-014 Cyan



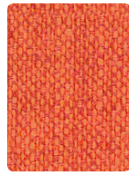
CARESSA
CA-007 Kilimanjaro



CARESSA
CA-067 Ecrú



FLORENTINO
FT-012 Dijon



KEY LARGO
KL-009 Tangerine



CARESSA
CA-063 Willow



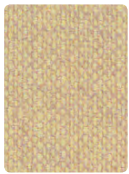
CARESSA
CA-084 Aqua



CARESSA
CA-064 Cerulean



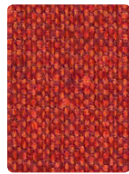
CARESSA
CA-066 Zinc



KEY LARGO
KL-027 Sand



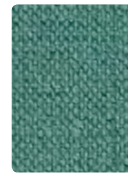
KEY LARGO
KL-002 Gold Coast



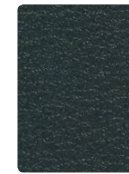
KEY LARGO
KL-019 Cayenne



KEY LARGO
KL-033 Pear



KEY LARGO
KL-024 Nassau



FLORENTINO
FT-014 Marine



FLORENTINO
FT-026 Dove



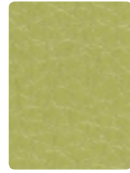
FLORENTINO
FT-037 Mushroom



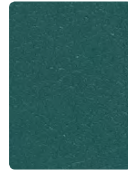
CARESSA
CA-060 Caramel



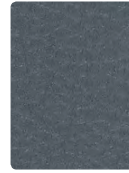
DURANGO
DU-009 Tangelo



CARESSA
CA-083 Wasabi



DURANGO
DU-033 Calypso



CARESSA
CA-044 Cadet



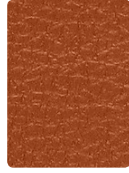
CARESSA
CA-046 Stone



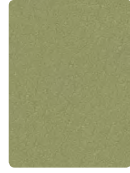
KEY LARGO
KL-020 Sandstone



DURANGO
DU-019 Sepia



CARESSA
CA-019 Bittersweet



DURANGO
DU-023 Jade



FLORENTINO
FT-044 Turquoise



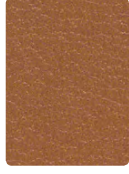
KEY LARGO
KL-004 Ultramarine



KEY LARGO
KL-026 Quarry



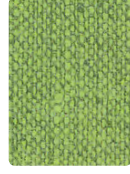
CARESSA
CA-037 Papyrus



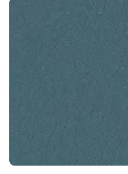
FLORENTINO
FT-019 Sepia



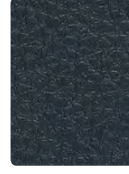
CARESSA
CA-009 Red Clay



KEY LARGO
KL-013 Palm



DURANGO
DU-024 Aegean



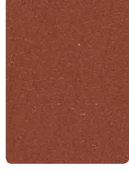
CARESSA
CA-014 Admiral



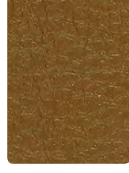
CARESSA
CA-026 Granite



FLORENTINO
FT-030 Mocha



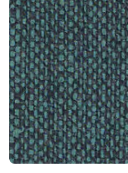
DURANGO
DU-029 Cordovan



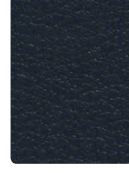
CARESSA
CA-050 Saddle



FLORENTINO
FT-043 Basil



KEY LARGO
KL-014 Aegean



FLORENTINO
FT-004 Sapphire



DURANGO
DU-016 Char

Additional colors are available. Please refer to the Mayer Fabrics website.

TECHNICAL INFORMATION

Hekman Contract Vinyl Coordinates

Pattern 54"	Content and Backing	Certifications	Weight/ Linear Yd.	Pattern Repeat	Finish	Abrasion Wyzenbeek	Light- Fastness	Flammability	Cleaning Code
CARESSA FR	80% Vinyl face, 20% Polyester backing Backing: 100% Polyester	GREENGUARD	29 oz.	None	Soil & stain resistant topcoat with ink resistant technology	650,000^ Double Rubs	1000 hours	Cal. 117-2013 NFPA 260/UFAC Class 1 ASTM E84 (Adhered) Class 1 or A BIFMA CS-191-53, Section 3 & Upholstery, Section 4 Boston Fire Dept. Code FMVSS 302 IMO A.652(16) 8.2 & 8.3 NY & NJ Port Authority	WS, Bleach Cleanable, CFC
DURANGO	78% Vinyl face, 22% Polyester backing Backing: 100% Polyester	GREENGUARD	30 oz.	None	Soil & stain resistant topcoat with ink resistant technology	1,000,000^ Double Rubs	650 hours	Cal. 117-2013 NFPA 260/UFAC Class 1 BIFMA Boston Fire Dept. Code FAA/FAR 25.853(a) & Appd. F Part I(a)(ii) Fed. Spec. CID A-A-2950/ supercedes CCC-A-680A FMVSS 302 NFPA 701 NY & NJ Port Authority	WS, Bleach Cleanable, CFC
FLORENTINO	86% Vinyl Phthalate (21P) Free face, 14% Polyester backing	GREENGUARD	28 oz.	None	Soil & stain resistant topcoat with ink resistant technology	651,000^ Double Rubs	650 hours	Cal. 117-2013 NFPA 260/UFAC Class 1 BIFMA CS-191-53, Section 3 & 4 FMVSS 302 IMO FTP 2010 Part 8, 3.1,3.2	WS, Bleach Cleanable, CFC
KEY LARGO <i>Directional</i>	86% Vinyl Phthalate (21P) Free face, 14% Polyester backing	GREENGUARD	28 oz.	None	Soil & stain resistant topcoat with ink resistant technology	250,000^ Double Rubs	650 hours	Cal. 117-2013 NFPA 260/UFAC Class 1 BIFMA CS-191-53, Section 3 & 4 FMVSS 302 IMO FTP 2010 Part 8, 3.1,3.2	WS, Bleach Cleanable, CFC

REDUCED ENVIRONMENTAL IMPACT

These products are GREENGUARD Certified for low chemical and particle emissions to UL standard UL 2818 and may contribute to LEED certification. For complete information visit mayerfabrics.com and UL.com/gg.

Caressa
Tris Free Phalates DNHP, BBP, and DEP Free

CARE AND CLEANING INFORMATION

CFC: Coated Fabrics Cleaning – Refer to Mayer website for complete cleaning info.

WS: Water/Solvent Cleaner

ADDITIONAL INFORMATION

CAL TB 133: All patterns may comply with California Technical Bulletin 133 when combined with appropriate components.

^Abrasion: Multiple factors affect fabric durability and appearance retention, including end-user application and proper maintenance. Wyzenbeek results above 100,000 double rubs have not been shown to be a reliable indicator of increased fabric lifespan.

Custom Capabilities: All patterns can be custom colored. Minimum yardage applies.

Digital Swatch Card Color Matching: Due to color variations on different monitors and color printers, actual swatch colors may vary slightly. Please request a memo sample from Mayer Fabrics to ensure proper color representation.

Specifications: Specifications are correct at the time of printing. Additional specifications are available on our website.



These fabrics meet or exceed these ACT performance guidelines.
*Certification Marks owned by ACT®

HEKMAN
CONTRACT

† 616.748.2660
www.hekmancontract.com

For additional colors, pre-approved patterns, grade-ins, samples and specifications, please refer to the Mayer Textile3D link.

Textile3D™
by Mayer Fabrics



† 317.267.2626 or 800.428.4415 ‡ 317.267.2629 or 877.7SAMPLE
www.mayerfabrics.com
©2017 Mayer-Paetz, Inc.

HCVCCD
50517