

SPECTRUM COLLECTION





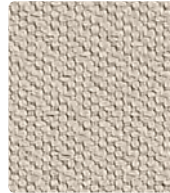
THEORY
423-037 Alabaster



CONTINUUM
422-026 Dove



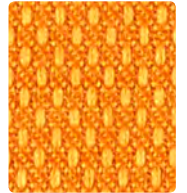
THEORY
423-016 Charcoal



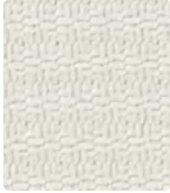
THEORY
423-017 Stone



CONTINUUM
422-002 Saffron



VARIANT
425-019 Orange Peel



PRISM
426-027 Zinc



PRISM
426-026 Dove



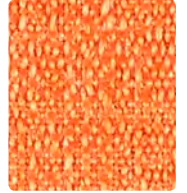
CONTINUUM
422-036 Iron



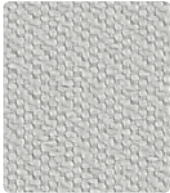
CONTINUUM
422-027 Stone



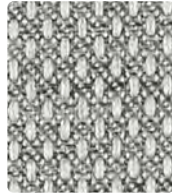
PRISM
426-002 Topaz



CONTINUUM
422-009 Mandarin



THEORY
423-026 Dove



VARIANT
425-016 Flint



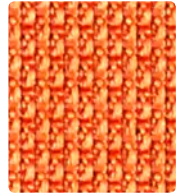
PRISM
426-016 Charcoal



PRISM
426-017 Stone



VARIANT
425-002 Mustard



OPTIC
424-009 Sunrise



VARIANT
425-017 Creme



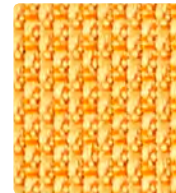
OPTIC
424-026 Elephant



OPTIC
424-006 Ash



THEORY
423-010 Mocha



OPTIC
424-019 Tangerine



THEORY
423-009 Mango



CONTINUUM
422-017 Almond



VARIANT
425-026 Aluminum



VARIANT
425-006 Carbon



PRISM
426-010 Mocha



CONTINUUM
422-007 Cafe Au Lait



PRISM
426-021 Tomato



VARIANT
425-007 Biscuit



CONTINUUM
422-016 Charcoal



CONTINUUM
422-006 Onyx



VARIANT
425-000 Chocolate



THEORY
423-007 Cafe Au Lait



CONTINUUM
422-019 Brick



OPTIC
424-017 Fieldstone



OPTIC
424-016 Coal



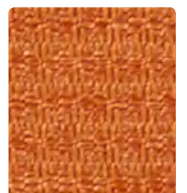
THEORY
423-006 Onyx



CONTINUUM
422-000 Espresso



VARIANT
425-010 Cocoa



PRISM
426-019 Clay



OPTIC
424-007 Mushroom



PRISM
426-006 Onyx



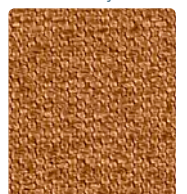
OPTIC
424-000 Brown Bear



THEORY
423-000 Espresso

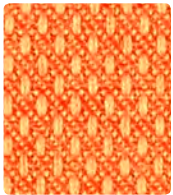


PRISM
426-007 Cafe Au Lait



THEORY
423-019 Tobacco

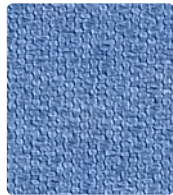
Additional colors are available. Please refer to the [Mayer Fabrics website](https://www.mayerfabrics.com).



VARIANT
425-009 Persimmon



THEORY
423-011 Rouge



THEORY
423-024 Slate



PRISM
426-034 Cerulean



CONTINUUM
422-023 Citrine



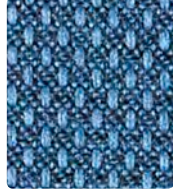
VARIANT
425-013 Jungle



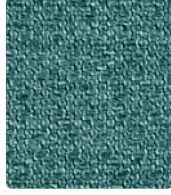
PRISM
426-009 Clementine



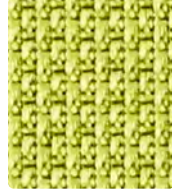
VARIANT
425-005 Aubergine



VARIANT
425-004 Ink



THEORY
423-044 Teal



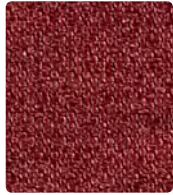
OPTIC
424-013 Green Apple



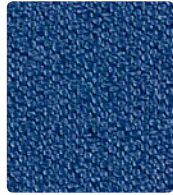
PRISM
426-003 Kale



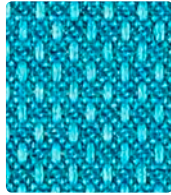
PRISM
426-011 Claret



THEORY
423-008 Port



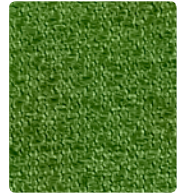
THEORY
423-014 Indigo



VARIANT
425-014 Prussian



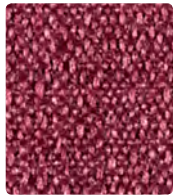
CONTINUUM
422-003 Spring



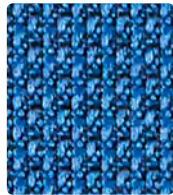
THEORY
423-003 Grass



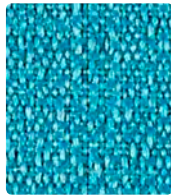
VARIANT
425-001 Barn Red



CONTINUUM
422-008 Beet



OPTIC
424-004 Yale



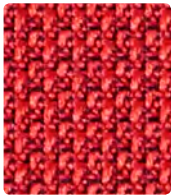
CONTINUUM
422-044 Ocean



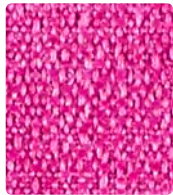
OPTIC
424-023 Springtime



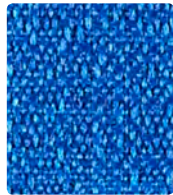
PRISM
426-013 Olive



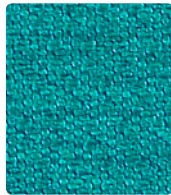
OPTIC
424-001 Red



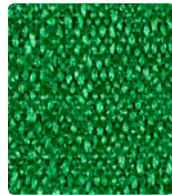
CONTINUUM
422-005 Magenta



CONTINUUM
422-014 Electric



THEORY
423-034 Peacock



CONTINUUM
422-013 Emerald



THEORY
423-023 Grove



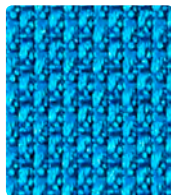
CONTINUUM
422-001 Lipstick



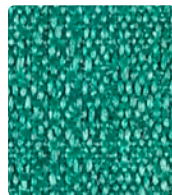
THEORY
423-015 Raspberry



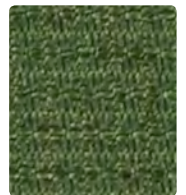
CONTINUUM
422-004 Indigo



OPTIC
424-024 Ocean



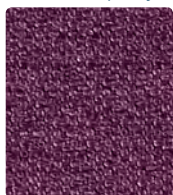
CONTINUUM
422-033 Pine



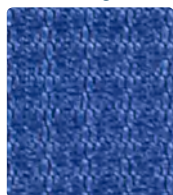
PRISM
426-023 Asparagus



THEORY
423-001 Lipstick



THEORY
423-005 Aubergine



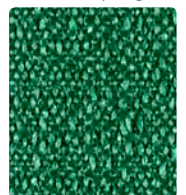
PRISM
426-004 Indigo



PRISM
426-024 Caribbean



OPTIC
424-033 Myrtle



CONTINUUM
422-043 Bottle



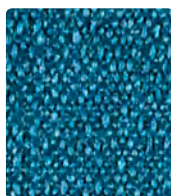
PRISM
426-001 Lipstick



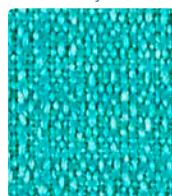
PRISM
426-005 Plum



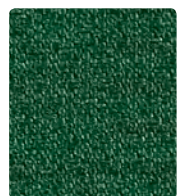
THEORY
423-004 Navy



CONTINUUM
422-024 Caribbean



CONTINUUM
422-034 Turquoise



THEORY
423-013 Evergreen

Additional colors are available. Please refer to the Mayer Fabrics website.

TECHNICAL INFORMATION

Spectrum Collection

| Pattern 54" | Content and Backing | Certifications | Weight/ Linear Yd. | Pattern Repeat | Finish | Abrasion Wyzenbeek | Light- Fastness | Flammability | Cleaning Code |
|----------------------------------------|------------------------------------------------------------------------------------|----------------------------|-----------------------|---------------------|--------------------|-------------------------|--------------------|--------------------------------------------------------------------------------|------------------|
| CONTINUUM <i>Directional</i> | 100% Post-Consumer Recycled Polyester Backing: Latex | GREENGUARD Gold | 15 oz. | 0.50" H, 0.59" V | Stain Repellent | 130,000^ Double Rubs | 40 hours | Cal. 117-2013 NFPA 260/UFAC Class 1 ASTM E84 (Unadhered) Class 1 or A | WS |
| OPTIC <i>Directional</i> | 83% Post-Consumer Recycled Polyester 17% Polyester Backing: Latex | GREENGUARD Gold | 16.5 oz. | 0.33" H, 0.20" V | Stain Repellent | 185,000^ Double Rubs | 40 hours | Cal. 117-2013 NFPA 260/UFAC Class 1 ASTM E84 (Unadhered) Class 1 or A | WS |
| PRISM <i>Directional</i> | 75% Post-Consumer Recycled Polyester 25% Polyester Backing: Latex | GREENGUARD Gold | 14.5 oz. | 0.17" H, 0.20" V | Stain Repellent | 105,000^ Double Rubs | 40 hours | Cal. 117-2013 NFPA 260/UFAC Class 1 ASTM E84 (Unadhered) Class 1 or A | WS |
| THEORY <i>Directional</i> | 75% Post-Consumer Recycled Polyester 25% Polyester Backing: Latex | GREENGUARD Gold | 14.5 oz. | 0.17" H, 0.39" V | Stain Repellent | 150,000^ Double Rubs | 40 hours | Cal. 117-2013 NFPA 260/UFAC Class 1 ASTM E84 (Unadhered) Class 1 or A | WS |
| VARIANT <i>Directional</i> | 75% Post-Consumer Recycled Polyester 25% Polyester Backing: Latex | GREENGUARD Gold | 14.5 oz. | 0.17" H, 0.20" V | Stain Repellent | 140,000^ Double Rubs | 40 hours | Cal. 117-2013 NFPA 260/UFAC Class 1 ASTM E84 (Unadhered) Class 1 or A | WS |

REDUCED ENVIRONMENTAL IMPACT

These products are **GREENGUARD Gold Certified** for low chemical and particle emissions to UL standard UL 2818 and may contribute to **LEED certification**. For complete information visit mayerfabrics.com and UL.com/gg.

Continuum



Eco-System®

Sustainable. Attainable at Mayer Fabrics.

The Eco-System icon indicates 100% recycled content.

CARE AND CLEANING INFORMATION

WS: Water/Solvent Cleaner

ADDITIONAL INFORMATION

CAL TB 133: All patterns may comply with California Technical Bulletin 133 when combined with appropriate components.

^Abrasion: Multiple factors affect fabric durability and appearance retention, including end-user application and proper maintenance. Wyzenbeek results above 100,000 double rubs have not been shown to be a reliable indicator of increased fabric lifespan.

Custom Capabilities: All patterns can be custom colored. Minimum yardage applies.

Digital Swatch Card Color Matching: Due to color variations on different monitors and color printers, actual swatch colors may vary slightly. Please request a memo sample from Mayer Fabrics to ensure proper color representation.

Specifications: Specifications are correct at the time of printing. Additional specifications are available on our website.



These fabrics meet or exceed these ACT performance guidelines.
*Certification Marks owned by ACT®



Water and Stain
Repellent Finish



This 100% polyester fabric is included in the Underwriter's Laboratory Fabric Recognition Program. Additional testing of this U.L. recognized component is not required on approved panels from participating manufacturers.



MAYERFABRICS