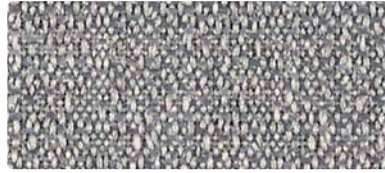


SPECTRUM COLLECTION

GROUP 4 FABRIC/TISSU GROUPE 4



VARIANT
VR26 Aluminum



CONTINUUM
CN36 Iron



OPTIC
OT16 Coal



VARIANT
VR17 Crème



VARIANT
VR16 Flint



CONTINUUM
CN37 Igloo



CONTINUUM
CN26 Dove



CONTINUUM
CN36 Iron



OPTIC
OT26 Elephant



OPTIC
OT16 Coal



VARIANT
VR07 Biscuit



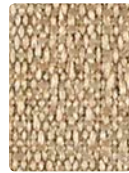
VARIANT
VR10 Cocoa



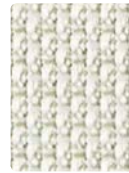
CONTINUUM
CN17 Almond



CONTINUUM
CN27 Stone



CONTINUUM
CN07 Café Au Lait



OPTIC
OT17 Fieldstone



OPTIC
OT07 Mushroom



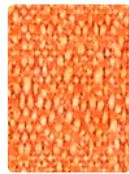
VARIANT
VR02 Mustard



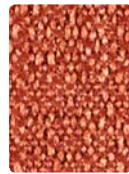
VARIANT
VR09 Persimmon



CONTINUUM
CN02 Saffron



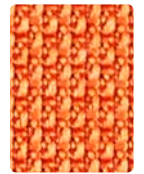
CONTINUUM
CN09 Mandarin



CONTINUUM
CN19 Brick



OPTIC
OT19 Tangerine



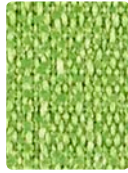
OPTIC
OT09 Sunrise



VARIANT
VR03 Palm



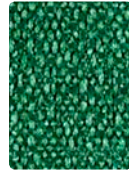
VARIANT
VR13 Jungle



CONTINUUM
CN03 Spring



CONTINUUM
CN13 Emerald



CONTINUUM
CN43 Bottle



OPTIC
OT13 Green Apple



OPTIC
OT23 Springtime



VARIANT
VR01 Barn Red



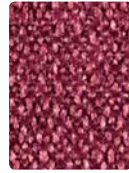
VARIANT
VR05 Aubergine



CONTINUUM
CN01 Lipstick



CONTINUUM
CN05 Magenta



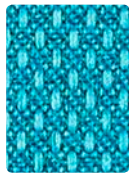
CONTINUUM
CN08 Beet



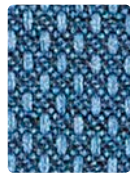
OPTIC
OT05 Mulberry



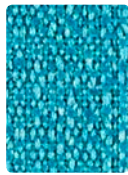
OPTIC
OT01 Red



VARIANT
VR14 Prussian



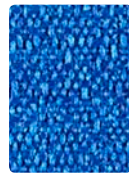
VARIANT
VR04 Ink



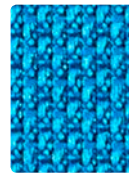
CONTINUUM
CN44 Ocean



CONTINUUM
CN04 Indigo



CONTINUUM
CN14 Electric



OPTIC
OT24 Ocean



OPTIC
OT04 Yale



VARIANT
VR00 Chocolate



VARIANT
VR06 Carbon



CONTINUUM
CN00 Espresso



CONTINUUM
CN16 Charcoal



CONTINUUM
CN06 Onyx



OPTIC
OT00 Brown Bear



OPTIC
OT06 Ash

TECHNICAL INFORMATION / INFORMATION TECHNIQUE

Spectrum Collection / Collection Spectrum

Pattern 54" / Patron 54po	Content and Backing / Composition et Traitement	Certifications	Weight/ Linear Yd. / Poids	Pattern Repeat / Répétition du Patron	Finish / Fini	Abrasion Wyzenbeek	Light-Fastness / Résistance de la couleur à Lumière	Flammability / Inflammabilité	Cleaning Code / Code pour Nettoyage	Group
CONTINUUM <i>Directional / Directionnel</i>	100% Post-Consumer Recycled Polyester Backing: Latex / 100% Polyester recyclé post-consommation Traitement: Latex	GREENGUARD Gold	15 oz. / 15 oz/vl	0.50" H, 0.59" V	Stain Repellent / Antitache	130,000^ Double Rubs / 130,000^ Cycles	40 hours / 40 heures	Cal. 117-2013 NFPA 260/UFAC Class 1 ASTM E84 (Unadhered / (Non collée) Class 1 or A	WS	4
OPTIC <i>Directional / Directionnel</i>	83% Post-Consumer Recycled Polyester, 17% Polyester Backing: Latex / 83% Polyester recyclé post-consommation, 17% Polyester Traitement: Latex	GREENGUARD Gold	16.5 oz. / 16.5 oz/vl	0.33" H, 0.20" V	Stain Repellent / Antitache	185,000^ Double Rubs / 185,000^ Cycles	40 hours / 40 heures	Cal. 117-2013 NFPA 260/UFAC Class 1 ASTM E84 (Unadhered / (Non collée) Class 1 or A	WS	4
VARIANT <i>Directional / Directionnel</i>	75% Post-Consumer Recycled Polyester, 25% Polyester Backing: Latex / 75% Polyester recyclé post-consommation, 25% Polyester Traitement: Latex	GREENGUARD Gold	14.5 oz. / 14.5 oz/vl	0.17" H, 0.20" V	Stain Repellent / Antitache	140,000^ Double Rubs / 140,000^ Cycles	40 hours / 40 heures	Cal. 117-2013 NFPA 260/UFAC Class 1 ASTM E84 (Unadhered / (Non collée) Class 1 or A	WS	4

REDUCED ENVIRONMENTAL IMPACT

These products are GREENGUARD Gold Certified for low chemical and particle emissions to UL standard UL 2818 and may contribute to LEED certification. For complete information visit mayerfabrics.com and UL.com/gg.

Ces produits sont GREENGUARD Gold Certifié pour les faibles émissions de produits chimiques et de particules au standard UL, UL 2818 et peut contribuer à la certification LEED. Pour tous les informations svp visitez mayerfabrics.com et UL.com/gg.

Continuum



Eco-System®
Sustainable. Attainable at Mayer Fabrics.

The Eco-System icon indicates 100% recycled content. /
Le symbole Eco-System Indique 100% de matière recyclée.

CARE AND CLEANING INFORMATION / ENTRETIEN ET NETTOYAGE

WS: Water/Solvent Cleaner /

WS: Nettoyant eau / solvant

ADDITIONAL INFORMATION / INFORMATION ADDITIONNEL

Cal TB 133: All patterns may comply with California Technical Bulletin 133 when combined with appropriate components.

^Abrasion: Multiple factors affect fabric durability and appearance retention, including end-user application and proper maintenance. Wyzenbeek results above 100,000 double rubs have not been shown to be a reliable indicator of increased fabric lifespan.

Custom Capabilities: All patterns can be custom colored. Minimum yardage applies.

Digital Swatch Card Color Matching: Due to color variations on different monitors and color printers, actual swatch colors may vary slightly. Please request a memo sample from Mayer Fabrics to ensure proper color representation.

Specifications: Specifications are correct at the time of printing. Current detailed specifications are available on our website. /

Cal TB 133: Tous les patrons peuvent se conformer à California Technical Bulletin 133 lorsqu'ils sont combinés avec des composants appropriés.

^Abrasion: Différents facteurs affectent la durabilité du tissu et la rétention de l'apparence, incluant l'application de l'utilisateur et propre entretien. Les résultats Wyzenbeek au-dessus de 100,000 cycles ne sont pas un indicateur fiable de l'augmentation de la durée de vie du tissu.

Capacités personnalisées: Tous les patrons peuvent avoir un couleur personnalisé. Métrage minimum s'applique.

Correspondance des couleurs de la carte numérique Swatch: En raison des variations de couleur sur les différents moniteurs et imprimantes couleur, les couleurs réelles des échantillons peuvent varier légèrement. Veuillez demander un échantillon de mémo auprès de Mayer Fabrics pour assurer une représentation correcte des couleurs.

Spécifications: Les spécifications sont correctes au moment de l'imprimer. Spécifications additionnelles sont disponibles sur notre site internet.



These fabrics meet or exceed these ACT performance guidelines.
*Certification Marks owned by ACT® /

Ces tissus respectent ou dépassent ces lignes directrices de performance ACT.

*Marques de certification appartenant à ACT®



Water and Stain Repellent Finish



This 100% polyester fabric is included in the Underwriter's Laboratory Fabric Recognition Program. Additional testing of this U.L. recognized component is not required on approved panels from participating manufacturers. /

Ce tissu 100% polyester est inclus dans le Underwriter's Laboratory Fabric Recognition Program. Tests supplémentaires de cette U.L. composant reconnu n'est pas requis sur les panneaux approuvés des fabricants participants.

HORIZON SEATING

