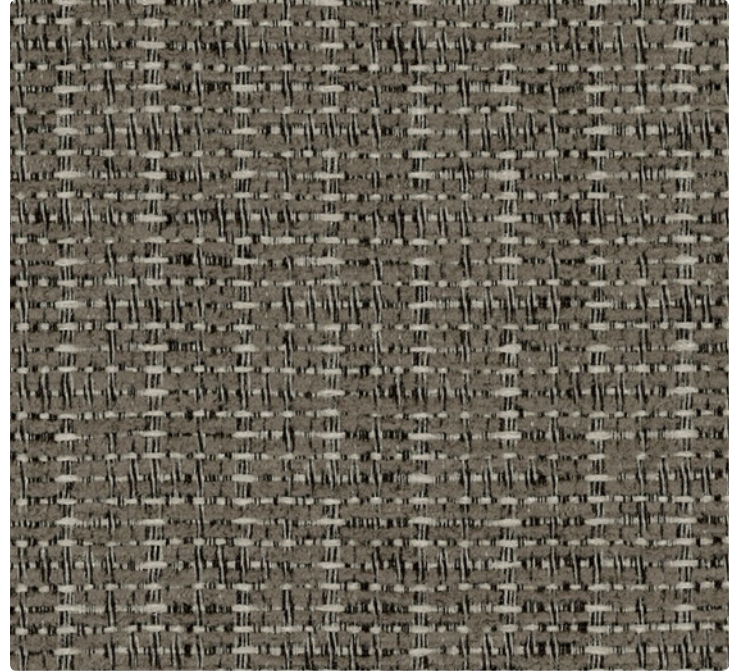


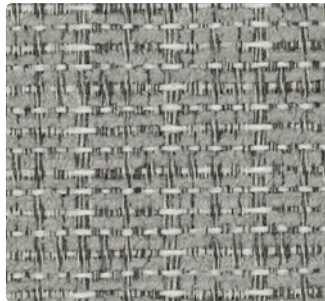
456-007  
Oatmeal



456-000  
Taupe



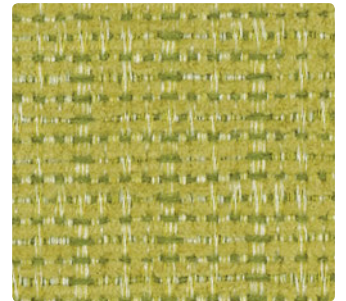
456-017  
Butterscotch



456-016  
Silver



456-009  
Tangerine



456-013  
Citrus



**Application**  
Upholstery Seating

**Content**  
52% Recycled Polyester,  
48% Polyester

**Width**  
54 inches / 137 cm

**Abrasion** (Wyzenbeek/Cotton Duck)  
Passes 63,000 Double Rubs

**Finish**  
Nano-Stain Repellent - PFOA &  
PFOS Free

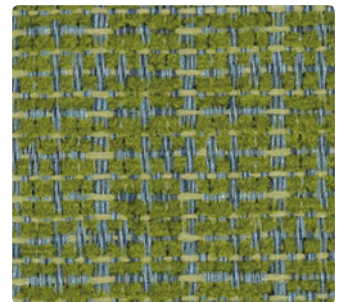
**Reduced Environmental Impact**  
GREENGUARD Gold Certified



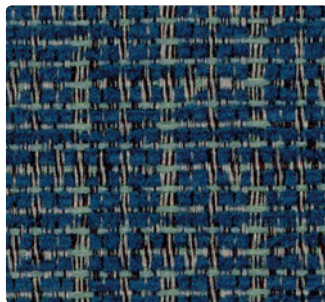
456-006  
Iron



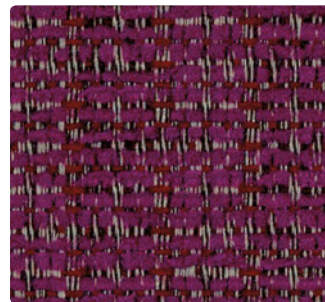
456-001  
Crimson



456-003  
Leaf



456-004  
Ocean



456-008  
Mulberry



456-023  
Pine

**TECHNICAL INFORMATION**

Content: 52% Recycled Polyester (34% Pre-/18% Post-Consumer), 48% Polyester		
Width: 54 inches / 137 cm	Weight: 13.44 oz./linear yard / 416.69 g/lm	
Backing: Acrylic	Finish: Nano-Stain Repellent - PFOA & PFOS Free	
Approx. Repeat: 0.938 in/2.38 cm H, 0.842 in/2.14 cm V Non-Matching	Directional: Yes	Railroaded: No

**PERFORMANCE**

Surface Abrasion: Heavy Duty ASTM D4157  
(Wyzenbeek/Cotton Duck)

**Results**

Passes 63,000 Double Rubs

Pilling Resistance ASTM D3511  
Colorfastness to Crocking AATCC 8  
Colorfastness to Light AATCC 16

Class 5  
Dry: Grade 4 min / Wet: Grade 3 min  
Grade 4 min at 40 hours

**FLAMMABILITY**

California Technical Bulletin 117-2013  
NFPA 260/UFAC Class 1  
May comply with California Technical Bulletin 133 when combined with appropriate components.

**REDUCED ENVIRONMENTAL IMPACT**

This product is GREENGUARD Gold Certified for low chemical and particle emissions to UL standard UL 2818 and may contribute to LEED certification. For complete information visit [mayerfabrics.com](http://mayerfabrics.com) and [UL.com/gg](http://UL.com/gg).

**CLEANING INFORMATION**

WS: Water/Solvent Cleaner

BC: Bleach Cleanable – 1 part bleach, 9 parts water = 10% bleach, 90% water solution. Do not clean/disinfect fabric for longer than 10 minutes using the 10% bleach solution. Always rinse promptly with clean water after applying the bleach solution. Failure to do so will void any and all warranties.

**DYE TRANSFER DISCLAIMER**

Certain clothing and accessory dyes (such as those used on denim jeans) may migrate to lighter colors. This phenomenon is increased by humidity and temperature and is irreversible. Mayer Fabrics will not assume responsibility for dye transfer caused by external contaminants. Please check compatibility when using this product in combination with painted or varnished surfaces.

**ADDITIONAL INFORMATION**

**Custom Capabilities:** All patterns can be custom colored. Minimum yardage applies.

**Digital Swatch Card Color Matching:** Due to color variations on different monitors and color printers, actual swatch colors may vary slightly. Please request a memo sample from Mayer Fabrics to ensure proper color representation.

**Specifications:** Specifications are correct at the time of printing. Current specifications are available on our website.



This fabric meets or exceeds these ACT performance guidelines.  
\*Certification Marks owned by ACT®



**MAYER**FABRICS